

# INVENTORY OF EXISTING AND PROPOSED TRAILS

---

## AN OVERVIEW OF EXISTING AND PROPOSED TRAILS IN WISE COUNTY

**ATV Trails:**                    **Mountainview Trails**                    Exists (302)  
Counties:                    Wise (Trails touch into both Dickenson and Russell County)  
Public Trail system already exists in Wise Co as part of Mountain View ATV Club. Over 100 miles classified as “multi-use”. Actual club location is in Clintwood (Dickenson County) although 95% of the trails are actually located in the northeast corner of Wise County. <http://www.mountainviewatvclub.org/>

**ATV Trails:**                    **Town of Appalachia**                    Potential  
Excellent potential for developing additional motorized trails similar to WV Hatfield & McCoy Trail System. The Town of Appalachia has expressed strong interest in passing an ordinance to become OHV friendly.  
**Recommendation:** Property owners north of the Town of Appalachia need to be contacted and discussions opened as to their receptiveness to allowing trail access through portions of their property. Potential to connect trails with proposed trails leading from the Country Cabin near the City of Norton.

**Bike Route & Scenic Drive:**                    **Heart of Appalachia Bike Route**                    Exists (88)  
Counties:                    Wise/Tazewell                    <http://www.virginia.org/site/description.asp?AttrID=15992>  
The Heart of Appalachia Bike Route runs from Burke’s Garden in Tazewell County to Guest River Gorge in Wise County on roughly half-paved/half-gravel roads. This 125 mile (with 40 miles of side trails) back road and back country biking excursion offers back roads, rails to trails, single track, historic sites, a natural preserve area, wilderness area, Amish general store, a pub, a swinging bridge, three scenic rivers, farms and coal country, and gorgeous views in Virginia’s less crowded southwestern counties of Tazewell, Bland, Russell, and Wise. This route crosses the Trans-America bike route along Route 80 in Russell Co. which provides one of only two wineries within a 100 mile radius.

**Bike Route:**                    **Big Stone Gap**                    Exists  
Counties:                    Wise/Tazewell                    <http://www.virginia.org/site/features.asp?FeatureID=147>  
Big Stone Gap provides biking opportunity in the mountains, The Heart of Appalachia Bike Route and Scenic Drive begins from Burke’s Garden in Tazewell County to the Guest River Gorge in Wise County - 128 miles of breathtaking scenery!

**Bike Route & Scenic Drive:**                    **Heart of Appalachia Bike Route**                    Exists (88)  
Counties:                    Wise/Tazewell/ Russell  
<http://www.virginia.org/site/description.asp?AttrID=15992>  
The Heart of Appalachia Bike Route runs from Burke’s Garden in Tazewell County to Guest River Gorge in Wise County on roughly half paved/half gravel roads. This 125 mile (with 40 miles of side trails) backroad and back country biking excursion. This route offers back roads, rails to trails, single track, historic sites, a natural preserve area, wilderness area, Amish general store, a pub, a swinging bridge, three scenic rivers, farms and coal country, and gorgeous views in Virginia’s less crowded, more agriculture and mountain region, the far southwestern counties of Tazewell, Bland, Russell, and Wise. This route crosses the Trans-America bike route along Route 80 in Russell Co. which provides the only winery within a 100 mile radius. The section through Tazewell County is the Garden Loop which takes Route 727, 667, 666, 625. Including side trips, the round trip is 18 miles.

# INVENTORY OF EXISTING AND PROPOSED TRAILS

---

**Bicycle Route:**            **Benge's Revenge - 1/4 Century Ride**    Exists

City of Norton/Wise        [http://www.wisecountychamber.org/benge's\\_revenge.htm](http://www.wisecountychamber.org/benge's_revenge.htm)

This 25 mile route starts at J.I. Burton High School in the City of Norton then proceeds to The Town of Appalachia and then through Big Stone Gap then loop back toward Norton ending back at J.I. Burton High School.

**Bike Trails:**            **Bullitt Park - Community Park**        Exists

County:                    Wise                    <http://www.virginia.org/site/description.asp?AttrID=15300>

Located in Big Stone Gap in Southwest Virginia. Bullitt Park is the largest of nine community parks operated by the Big Stone Gap Department of Parks and Recreation. The park includes a football field, tennis courts, fitness and biking trails, large playground, picnic areas, pavilions and a track. Serving as a park since 1935, it is the site for many community activities such as singing conventions, band festivals and craft shows. Bullitt Park was named for Joshua Taggart Bullitt, an early entrepreneur, land speculator and coal mining baron.

**Bike/Hike Trail:**        **Sugar Hill**                                    Exists

County:                    Wise

There is an excellent hiking/biking trail that follows the Clinch River. It is very well marked. Has excellent maps and is used by many. Portions are also included on the VWBT. See Wildlife Trails in this section. Just off ALT Rt. 58 at St. Paul.

**Canoe Trail:**            **Powell River**                                Exists (Web)

County:                    Wise                    <http://www.riverfacts.com/rivers/13536.html>

Class V+ - 4 miles long (South Fork Gorge)

**Canoe Trail:**            **Pound River**                                Exists (Web)

Counties:                Wise/Dickenson        <http://www.riverfacts.com/rivers/13532.html>

Class I-II - 8.5 miles long (Route 624 to Pound Fishing Access)

**Canoe Trail:**            **Clinch River**                                Exists (Web)

Counties:                Wise/Scott            <http://www.riverfacts.com/maps/13441.html>

Canoe Trail from St. Paul to Dungannon on the Clinch River.

AW Class: I , easy. Length: 18 miles.

Put-in Location Coordinates: Latitude: 36.9015 Longitude: -82.3081

Takeout Location Coordinates: Latitude: 36.8246 Longitude: -82.46331

**Canoe Trail:**            **Little Stony River – Ramey Fork**    Exists (Web)

Counties:                Wise/Scott            <http://www.riverfacts.com/rivers/13498.html>

Class V+ - 3.5 miles long (Ramey Fork to Hanging Rock)

**Canoe Trail:**            **Guest River**                                Exists (Web)

Counties:                Wise /Scott            <http://www.riverfacts.com/rivers/13466.html>

Class IV-V - 8 miles long (Rt. 72 to Clinch River)

**Canoeing/Kayaking:**        **Guest River Scenic River Trail**        Exists (VA Web)

County:                    Wise                    [www.fs.fed.us/r8/gwj/ranger\\_districts/clinch.shtml](http://www.fs.fed.us/r8/gwj/ranger_districts/clinch.shtml)

This portion of the Guest River is designated a State Scenic River.

# INVENTORY OF EXISTING AND PROPOSED TRAILS

---

## Hiking Trails:           **Appalachia Trail**

County:                   Wise

[http://www.fs.fed.us/r8/gwj/clinch/recreation/hiking/appalachia\\_trail.shtml](http://www.fs.fed.us/r8/gwj/clinch/recreation/hiking/appalachia_trail.shtml)

Trail can give the average hiker a pleasant excursion to Little Stone Mountain, where there are views of Appalachia, Virginia and Roaring Branch. Black Mountain and Kentucky can also be seen.

**Location:** Trail begins at stoplight at intersection of US ALT 58 and State Route 68 old maintenance road along stream up a hollow for 0.2 miles. Turn right (when coming from Big Stone Gap), cross small bridge then turn right onto Cold Springs Drive. Trailhead is at the end of Cold Springs Drive.

Length of trail: 1.3 miles   Open year-round. Rated as difficult due to short sections of the trail being steep and rocky.

## Hiking Trails:           **Austin Gap Trail:**

County:                   Wise

A 4-mile moderately difficult side trip from the Cumberland Mountain Trail.

[http://www.fs.fed.us/r8/gwj/clinch/recreation/hiking/austin\\_gap\\_trail.shtml](http://www.fs.fed.us/r8/gwj/clinch/recreation/hiking/austin_gap_trail.shtml)

## Hiking Trails:           **Chief Benge Scout Trail**                   Exists (VA Web)

City of Norton/Wise

[http://www.fs.fed.us/r8/gwj/clinch/recreation/hiking/chief\\_benge\\_trail.shtml](http://www.fs.fed.us/r8/gwj/clinch/recreation/hiking/chief_benge_trail.shtml)

The 15.7 mile Chief Benge Scout Trail starts at High Knob Observation Tower, follows signs and ends at Little Stony National Recreation Trail which continues 3 miles further to Hanging Rock Picnic Area at Dungannon, VA. It tends to follow the meandering Mountain Fork and Little Stony Creek as it threads its way through the mountains of Wise and Scott counties. The trail links the cool waters of High Knob Lake with 30-foot falls, rapids, and small pools on the Little Stony.



The trail follows old railroad grades at river level but makes several steep climbs. Trailheads with parking are located at each end of trail. Trail is noted as difficult due to steep terrains on portions of the trail. Noted that in 2009, \$400,000 was awarded to do work on trail. Another description from a different source:

[http://www.sherpaguides.com/virginia/mountains/app\\_plateau/north\\_end\\_st\\_mountain.html](http://www.sherpaguides.com/virginia/mountains/app_plateau/north_end_st_mountain.html)

Map: [http://www.sherpaguides.com/virginia/mountains/maps/stone\\_mountain.html](http://www.sherpaguides.com/virginia/mountains/maps/stone_mountain.html)

*Taken directly from website: The Chief Benge Scout Trail is a fairly difficult and mountainous 19.6 miles, but it offers more than ample rewards. It takes off from the High Knob observation tower through lush, waist-high carpets of jewelweed. The Scout Trail winds across knobs and through hollows, beside rushing streams and along canopied paths of Catawba rhododendron and mountain laurel. The lower end connects with Little Stony National Recreation Trail and continues 3 miles to Hanging Rock at Dungannon. The trail provides an excellent opportunity for a two- or three-day backpacking trip. Anglers should pack a rod if they would like to catch stocked trout from Mountain Fork or Little Stony Creek. Or hikers can approach the trail in sections by leaving a second car at one of several access roads.*

Chief Benge was a fierce Indian leader who terrorized southwest Virginia's early white settlers. He took savage umbrage at those who wanted to shove his people from their ancestral mountains west into flat, hot Oklahoma territory.

- Trail: 19.6-mile winding path.
- Elevation: 4,200 feet at High Knob to 2,350 feet at lower trailhead.
- Degree of difficulty: Difficult because of length and uneven terrain.

# INVENTORY OF EXISTING AND PROPOSED TRAILS

---

**Hiking Trails:**            **Cumberland Mountain Trail**            Exists (Web)

County:                      Wise

[http://www.fs.fed.us/r8/gwj/clinch/recreation/hiking/cumberland\\_mtn\\_trail.shtml](http://www.fs.fed.us/r8/gwj/clinch/recreation/hiking/cumberland_mtn_trail.shtml)

Trail begins at Pound Gap VA on Forest Service Road 201 and comes down from Pinnacle Rock to the Breaks Interstate Park. Very popular for horseback riding.

Length: 25.7 miles    Open year-round

Ratings:    Difficult --requires map reading skill and challenge to travel. Hikers and horseback riders are encouraged to carry water. Safety is also a concern because the trail is steep and rocky and there are large rock outcrops along the trail.

**Hiking Trails:**            **Devils Fork Trail System**            Exists (Website below)

County:                      Wise

[http://www.sherpaguides.com/virginia/mountains/app\\_plateau/north\\_end\\_st\\_mountain.html](http://www.sherpaguides.com/virginia/mountains/app_plateau/north_end_st_mountain.html)

Taken directly from website: The soothing sound of water cascading over rocks. Quiet pools beneath virgin hemlocks. Expansive vistas from remote overlooks on Little Mountain. Rewards such as these await those who tackle the tough hikes of this trail system southwest of High Knob.

The Devils Bathtub Trail goes up Devils Fork along an old railroad grade once used for carrying logs and coal from the slopes of Little Mountain. As hikers cross back and forth across the stream, they pass through old growth hemlock stands, see a rusting, abandoned railroad car, and watch water racing down rock chutes and swirling through the rock tub that gives the trail its name.

After 1.5 miles, at the Devils Bathtub, the hiker can double back to the parking lot or continue westward, following the Devils Fork Loop Trail up Corder Hollow to a 20-foot waterfall, passing many hollows and beautiful views. After 4.2 miles (5.7 miles from the start), the loop trail connects with Straight Fork Ridge Trail. The hiker can go left on this trail for 1.8 miles up Little Mountain to the upper trailhead at FR 237, or go right 1.6 miles down the mountain to finish the loop at the parking lot. The lack of facilities and the rugged terrain make this an ideal trail for those who like a more remote experience. Two primitive camping areas (no water) are available on the loop trail, one at the lower west end and one about .7 mile west of the connection with the Straight Fork Ridge Trail.

- **Directions:** From Fort Blackmore, in central Scott County, go north on VA 619 for 2.9 miles to junction with VA 653. Continue north on VA 619 for 1.1 miles and turn left on FR 619 at white house with fenced yard and go .3 mile to trailhead parking. To access northern trailhead for Straight Fork Ridge Trail from VA 619 at High Knob, go southwest on FR 237 for 4 miles to trailhead.
- **Trails:** Devils Bathtub Trail is 1.5-mile (one-way) path along old railroad grade, with 10 crossings of Devil Fork. Devils Loop combines Devils Bathtub Trail with 6-mile rigorous climb and descent on Little Mountain back to trailhead at parking lot. Straight Fork Ridge Trail leads from northeast point of Devils Fork Loop 2 miles up scenic ridge to FR 237 on Little Mountain.
- **Elevation:** Lower trailhead is at 1,550 feet. Highest points are 2,000 feet on Devils Bathtub Trail, 2,800 feet on Devils Loop Trail, and 3,350 feet where Straight Fork Ridge Trail connects with FR 237.
- **Degree of difficulty:** Moderate, with many stream crossings (which may be treacherous) on Devils Bathtub Trail, and moderate to difficult (because of steep sections) on Devils Loop and Straight Fork Ridge trails.
- **Surface:** Natural forest floor with many stream crossings.



# INVENTORY OF EXISTING AND PROPOSED TRAILS

---

**Hiking Trails:**            **Guest River Scenic River Trail**            Exists (VA Web)

County:                    Wise                    [http://www.fs.fed.us/r8/gwj/ranger\\_districts/clinch.html](http://www.fs.fed.us/r8/gwj/ranger_districts/clinch.html)

Rails to trails project that follows an old railroad right of way paralleling the Guest River, a Virginia Scenic River. This picturesque 5.8-mile rail-trail follows the old Norfolk-Southern railroad route once used to haul coal. The trail passes through Swede Tunnel, built in 1922 and over a number of trestles. This portion of the Guest River is designated a State Scenic River. Hikers, bicyclists, anglers, canoeists, and kayakers are invited to enjoy the scenery and interesting geology of the gorge. The trailhead features paved parking and restrooms.

[http://www.sherpaguides.com/virginia/mountains/app\\_plateau/north\\_end\\_st\\_mountain.html](http://www.sherpaguides.com/virginia/mountains/app_plateau/north_end_st_mountain.html)

**Hiking Trails:**            **High Knob Hiking Trails**            Exists

County:                    Wise                    <http://www.virginia.org/site/description.asp?AttrID=15313>

**Description:** Two trails are marked with yellow paint at the High Knob Tower entrance. A 1.3 mile trail leads to High Knob Lake at the Recreation Area. Or for the more adventuresome, a 19.2 mile trail leads to Hanging Rock Recreational area on the Mountain Fork Trail.

**Hiking Trails:**            **Kitchen Rock Trail**                    Exists (Web)

County:                    Wise                    <http://www.virginia.org/site/description.asp?attrID=17580>

0.5 mile located in the George Washington/Jefferson National Forest near Bark Camp Lake.

**Hiking Trails:**            **Lake Shore Trail at Bark Camp Lake**            Exists (VA Web)

County:                    Wise

[http://www.fs.fed.us/r8/gwj/clinch/recreation/hiking/bark\\_camp\\_trail.shtml](http://www.fs.fed.us/r8/gwj/clinch/recreation/hiking/bark_camp_trail.shtml)

Lake Shore Trail is a 3.7 mile easy trail that begins at the boat launch ramp at Bark Camp Lake and turns toward the dam, following the foot trail. The trail takes one across the dam and around the lake and ends in the Bark Camp Lake parking lot (a loop trail). Intersects with Chief Benges Scout Trail. Heavy use around the recreational area. Light use on rest of trail. (Between Coeburn and City of Norton)

**Hiking Trails:**            **Laurel Fork Trail**

County:                    Wise                    <http://www.virginia.org/site/description.asp?AttrID=15857>

Primitive atmosphere for camping and picnicking. Accessible by boat or foot trail only. The trail is 1.5 miles long and is difficult requiring some skill and challenge to travel. It has beautiful scenery (small waterfalls, geological formations, a variety of vegetation) and uncrowded conditions. Near the Town of Wise, there is an excellent base camp to explore upper reaches of Cumberland Mountain using old roads, logging trams and existing trails.

**Hiking Trail:**            **Philips Creek Loop Trail**            Exists (Web)

County:                    Wise

[http://www.fs.fed.us/r8/gwj/clinch/recreation/hiking/phillips\\_creek\\_trail.shtml](http://www.fs.fed.us/r8/gwj/clinch/recreation/hiking/phillips_creek_trail.shtml)

A self guided trail that requires only a narrative trail brochure. There are stops on the trail, the first in a wildlife clearing for deer, turkey and other wild game. Next pass an old homestead, and traces of the house. A White Pine stand that was planted in the 1950's and an Eastern Hemlock log to count the annual rings. Across the creek is the remnants of an old moonshine still. Next is a very pretty waterfall along a high sandstone cliff. Proceed to an old Indian hunting camp. Start down the trail back to the parking lot there is an old railroad grade used in the late 1890's and 1900's to haul logs. Length of trail: 1.3 mile Trailhead at end of Philip Creek Recreation Area. Open year-round. Level of difficulty – Easy.

# INVENTORY OF EXISTING AND PROPOSED TRAILS

---

**Hiking Trail: Red Fox Trail** Exists (Web)  
County: Wise [http://www.fs.fed.us/r8/gwj/clinch/recreation/hiking/red\\_fox\\_trail.shtml](http://www.fs.fed.us/r8/gwj/clinch/recreation/hiking/red_fox_trail.shtml)  
A 2-mile round-trip interpretive hike back to 1892, when a massacre at the site left several people dead. Located just past the Pound Gap historical marker, the Red Fox Trail follows an old wagon trail roadbed and narrow gauge railroad. Red Fox Trail is an historical trail, with interpretive signs placed at various locations along the trail telling the story of the Killing Rock and the Ambush there.  
Historical story: [www.burnhamink.com/files/Hike](http://www.burnhamink.com/files/Hike).  
Photo of trail and interpretive signs: [http://www.wisevahistoricalsoc.org/red\\_fox\\_trail.htm](http://www.wisevahistoricalsoc.org/red_fox_trail.htm)

**Hiking Trail: Stone Mountain Trail** Exists (Web)  
County: Wise  
[http://www.fs.fed.us/r8/gwj/clinch/recreation/hiking/stone\\_mtn\\_trail.shtml](http://www.fs.fed.us/r8/gwj/clinch/recreation/hiking/stone_mtn_trail.shtml)  
Trail starts at the mouth of Roaring Branch (between Big Stone Gap and Appalachia along Hwy 23) where hikers must first climb a series of stairs. The trail follows the top of Stone Mountain ending at Cave Spring Recreation Area. Open year-round. Light use of trail. Length of trails is 14.3 miles.  
Rated difficult due to its length and uneven footing.

**Hiking Trails: Wallen Ridge Trail** Exists (VA Web)  
County: Wise  
[http://www.fs.fed.us/r8/gwj/clinch/recreation/hiking/wallen\\_ridge\\_trail.shtml](http://www.fs.fed.us/r8/gwj/clinch/recreation/hiking/wallen_ridge_trail.shtml)  
Starts at Forest Service Road 641 (just south of Big Stone Gap) and ends at Lovelady Gap. A 6.9 mile moderately difficult trail primarily through a canopy of hardwoods. Open year-round. Lightly used.

**Horse Trails: Cumberland & Pine Mountain Horse Trail** In the works (302)  
Counties: Wise/Dickenson  
<http://www.virginia.org/site/description.asp?AttrID=38377>  
Serious hikers or horseback riders will love this scenic trail which follows the crest of the Cumberland Mountains dividing Virginia and Kentucky for 26 miles from Pound Gap in Wise County to Potter's Flats in the Breaks Interstate Park. Trailhead parking available for horse trailers. The trail requires map reading and safety skills. At least 7 access points exists off St. Rt. 630 and 611. Join us for our annual trail rides the 2nd weekend in May and the second weekend in October. When complete, the Pine Mountain Horse Trail will connect Breaks Interstate Park with the Pound Reservoir in Wise County.

**Horse Trails: Dan Hall Resort** Exists (Web)  
County: Wise [www.virginiagolf.com/danhall.html](http://www.virginiagolf.com/danhall.html)  
Horse back riding through mountain trails. Also full resort and golf course. Near Coeburn.

**Mountain Biking: Guest River Gorge in Jefferson National Forest**  
County: Wise [http://www.fs.fed.us/r8/gwj/flash\\_file/gwjmap.swf](http://www.fs.fed.us/r8/gwj/flash_file/gwjmap.swf)  
Trails exist but need maps. Contact Mountain Bike Club or Philip Prince

**Mountain Biking: Pound Launch area in Jefferson National Forest**  
County: Wise [http://www.fs.fed.us/r8/gwj/flash\\_file/gwjmap.swf](http://www.fs.fed.us/r8/gwj/flash_file/gwjmap.swf)  
Trails exist but need maps. Contact Mountain Bike Club or Philip Prince

# INVENTORY OF EXISTING AND PROPOSED TRAILS

---

**Mountain Biking: Philips Creek area in Jefferson National Forest**

County: Wise [http://www.fs.fed.us/r8/gwj/flash\\_file/gwjmap.swf](http://www.fs.fed.us/r8/gwj/flash_file/gwjmap.swf)

Trails exist but need maps. Contact Mountain Bike Club or Philip Prince

**Public Fishing Lakes: Bark Camp Lake** Exists (231)

County: Wise/Scott

**Public Fishing Lakes: Keokee Lake** Exists (231)

Counties: Wise/Lee

Keokee Lake is a 92-acre impoundment located in Lee County. The lake is surrounded by National Forest lands. The lake offers fishing for largemouth bass, bluegill, redear sunfish, and channel catfish. Flooded standing timber is the dominant habitat type for this lake. Navigation routes were cleared while the lake was drawn down in 2003, but boaters should still use caution.

**Public Fishing Lakes: High Knob Lake**

County: Wise

Stocked lake. Fishing is permitted with a Virginia license and a Forest Service Stamp.

**Public Fishing Lakes: North Fork of Pound Reservoir** Exists

Fish population in the lake includes largemouth bass, crappie, catfish and sunfish. The lake is stocked by the Virginia Department of Game and Inland Fisheries.

**Rail to Trail: Guest River Trail (Rail to Trail)** Exists

County: Wise <http://www.virginia.org/site/description.asp?AttrID=16010>

Rails to trails project that follows an old railroad right of way paralleling the Guest River, a Virginia Scenic River. Trout fishing is permitted in the river, as well as kayaking and canoeing. During the early 1900's when timber and coal were being hauled out of the remote areas of Dickenson County, this passage was used as a rail line. The history of the Gorge shows that millions of years ago the Guest River eroded a passage through Stone Mountain on its way to join the Clinch River. Cutting through massive rock, it opened a deep rock corridor that is a scenic wonder. Many other curiosities exist along the six mile trail, including an old railroad tunnel, bridges using the remaining railroad trestles, waterfalls and rock outcroppings.

**Recreation Area: Bark Camp Lake**

County: Wise <http://www.virginia.org/site/description.asp?AttrID=15181>

The camp offers 25 camping units with tent pad, picnic table and parking spur near 60 acre warm water lake which provides opportunities for fishing and boating (electric motors only). Paved boat launching ramp, hiking trails and picnic units with tables and grills are also features of the site. The lake was constructed by the Virginia Department of Game and Inland Fisheries and is stocked with northern pike, bass, blue gill, rainbow trout and catfish. Two handicapped accessible fishing piers have been constructed with a handicapped trail on the northern shoreline below the parking lot.

# INVENTORY OF EXISTING AND PROPOSED TRAILS

---

**Recreation Area:**     **High Knob Recreation Area**                             Exists

County:                     City of Norton/Wise

<http://www.virginia.org/site/description.asp?AttrID=15201>

At an elevation of 3,800 feet, High Knob Recreation Area is the highest campground in the Clinch Ranger District of the Jefferson National Forest. The main attraction at the site is High Knob Lake, a 4 acre cold water lake with a 300 ft. sand swimming beach. A small amphitheater is located on a hillside behind the beach house. The lake is stocked and fishing is permitted with a Virginia license and a Forest Service Stamp. Several trails can be accessed from the campground. Camping area includes 14 sites for tents and recreational vehicles (up to 16 feet long) with picnic tables, bath house with showers, and flush toilets.

From the recreation area, hike the High Knob Tower Trail (< 1.5 miles) to the observation tower. Atop this summit, standing at 4220 feet, a clear sky can produce views of the surrounding mountain ridges in Kentucky, Tennessee, North Carolina, and Virginia. Note: the observation tower burned down recently and is inaccessible to visitors at this time. Trails are now open to the site where it once stood. (updated 6-09).

**Recreation Area & Fishing:**     **North Fork of Pound Reservoir**                             Exists

County:                     Wise

<http://www.virginia.org/site/description.asp?AttrID=15200>

Built in 1966 as authorized by the Flood Control Act of 1960, the 154 acre lake is used for fishing, boating, camping, picnicking, hiking, and municipal water supply. Picnic area overlooks reservoir and is complete with restroom facility. The reservoir is managed by the US Army Corps of Engineers, but most of the developed recreation sites are managed by the Jefferson National Forest. Fish population in the lake includes: largemouth bass, crappie, catfish and sunfish. The lake is stocked by the Virginia Department of Game and Inland Fisheries. Cane Patch campground is the center of the recreation activity on the lake. It has 33 camping sites with restrooms, showers and playground equipment. The Laurel Fork campgrounds provide a more primitive atmosphere for campers and is only accessible by boat.

**Ropes Course:**             **Appalachian Wilderness Adventure Program**                             Exists

County:                     Wise

<http://www.virginia.org/site/description.asp?AttrID=15042>

The Appalachian Wilderness Adventure Program (AWAP) is a challenging ropes course. The program is a part of the ministries located at Camp Bethel, which also operates youth summer camp.

**Scenic River:**             **Guest River**   Exists (155)

Counties:                 Wise/Russell

Guest River in Wise County flows through a spectacular gorge on its way to join the Clinch River and has been designated a scenic river. Follows Route 72 to confluence with Clinch River.

**Recommendation:** The Forest Service should evaluate the Guest River's potential as a National Wild or National Scenic River.



# INVENTORY OF EXISTING AND PROPOSED TRAILS

---

**State Parks:**                    **Southwest Virginia Museum**                    Exists (220)

Counties:                    Wise/Dickenson

[http://www.dcr.virginia.gov/state\\_parks/sou.shtml](http://www.dcr.virginia.gov/state_parks/sou.shtml)

The museum is housed in a mansion built in the 1880s by Rufus Ayers, a Virginia attorney general. The museum was bequeathed to the commonwealth in 1946 by C. Bascom Slemper, private secretary to President Calvin Coolidge and a member of the U. S. Congress. The museum was officially dedicated by the state in 1948. Museum features a collection comprised of more than 20,000 pieces, about one third of which is on display at any given time. The museum chronicles the exploration and development of the region during the 1890s coal boom, as well as the pioneer period. It offers activities for kids, scout and school programs, workshops, an annual Festival of Trees program, a quilt show, a music festival and outdoor exhibits. Also offered is a unique gift shop and a Victorian Parlor Conference Room available for rent by calling the museum.

**Trails:** The museum is an Audubon Bird Sanctuary, and many various songbirds can be seen on the grounds. A permanent outdoor exhibit, the Southwest Virginia Walk of Fame, showcases the region's heritage. The exhibit advances the knowledge, awareness and appreciation of renowned Southwest Virginians, past and present, who have made significant contributions to the commonwealth, the nation and the world.

**Thematic Trail:**                    **Crooked Road**                    Exists (290)

Counties:                    Wise/Lee/Scott/Dickenson/City of Norton

<http://www.thecrookedroad.org/>

250 mile Virginia's Heritage Music Trail Map: <http://www.virginia.org/images/CRmap2big.gif>

Bike across Virginia Event - <http://www.bikevirginia.org/2008/>

**Trail:**                    **Pine Mountain Trail**                    Proposed (88)

County:                    Wise

Map on web <http://www.kingdomcome.org/maps/pmrrar.html>

Pine Mountain Trail, when complete, will stretch nearly 120 miles to connect Breaks Interstate Park to the Cumberland Gap National Park in Kentucky as part of the Great Eastern Trail. The section in Virginia will connect Breaks to the Pound Reservoir in Wise County.

**Virginia Birding & Wildlife Trail:**                    **Appalachian Wonders Loop VBWT**                    Exists

Counties:                    Wise/Scott/City of Norton

<http://www.dgif.virginia.gov/vbwt/loop.asp?trail=2&loop=MAW>

**Virginia Birding & Wildlife Trail:**                    **St. Paul Loop VBWT**

Counties:                    Wise/Russell

<http://www.dgif.virginia.gov/vbwt/loop.asp?trail=2&loop=MSP>

# INVENTORY OF EXISTING AND PROPOSED TRAILS

---

**Virginia Birding & Wildlife Trail: Big Stone Gap Loop** Exists  
Counties: Wise/Lee  
<http://www.dgif.virginia.gov/vbwt/loop.asp?trail=2&loop=MBS>

**Virginia Birding & Wildlife Trail: Lonesome Pine Loop VBWT** Exists  
Counties: Wise/Dickenson/Buchanan  
<http://www.dgif.virginia.gov/vbwt/loop.asp?trail=2&loop=MLP>

## OTHER NOTED INFORMATION OR ATTRACTIONS

**Archaeological Survey** Exists (132)  
Portions are fair to good.

**Architectural Survey** Exists (132)  
Rated excellent

**Biodiversity Ranking** Exists (247)  
Noted as outstanding, very high, high, and moderate to general interest dependent upon the area in discussion.

**Conservation Lands: Federal** Exists  
Counties: Scott/Lee/Wise/Dickenson

**Conservation Lands - State** Exists  
County: Wise

**Full time parks & recreation directors** None for Wise County

**National Forest: George Washington & Jefferson National Park** Exists (212)  
Counties: Scott/Lee/Wise/Dickenson

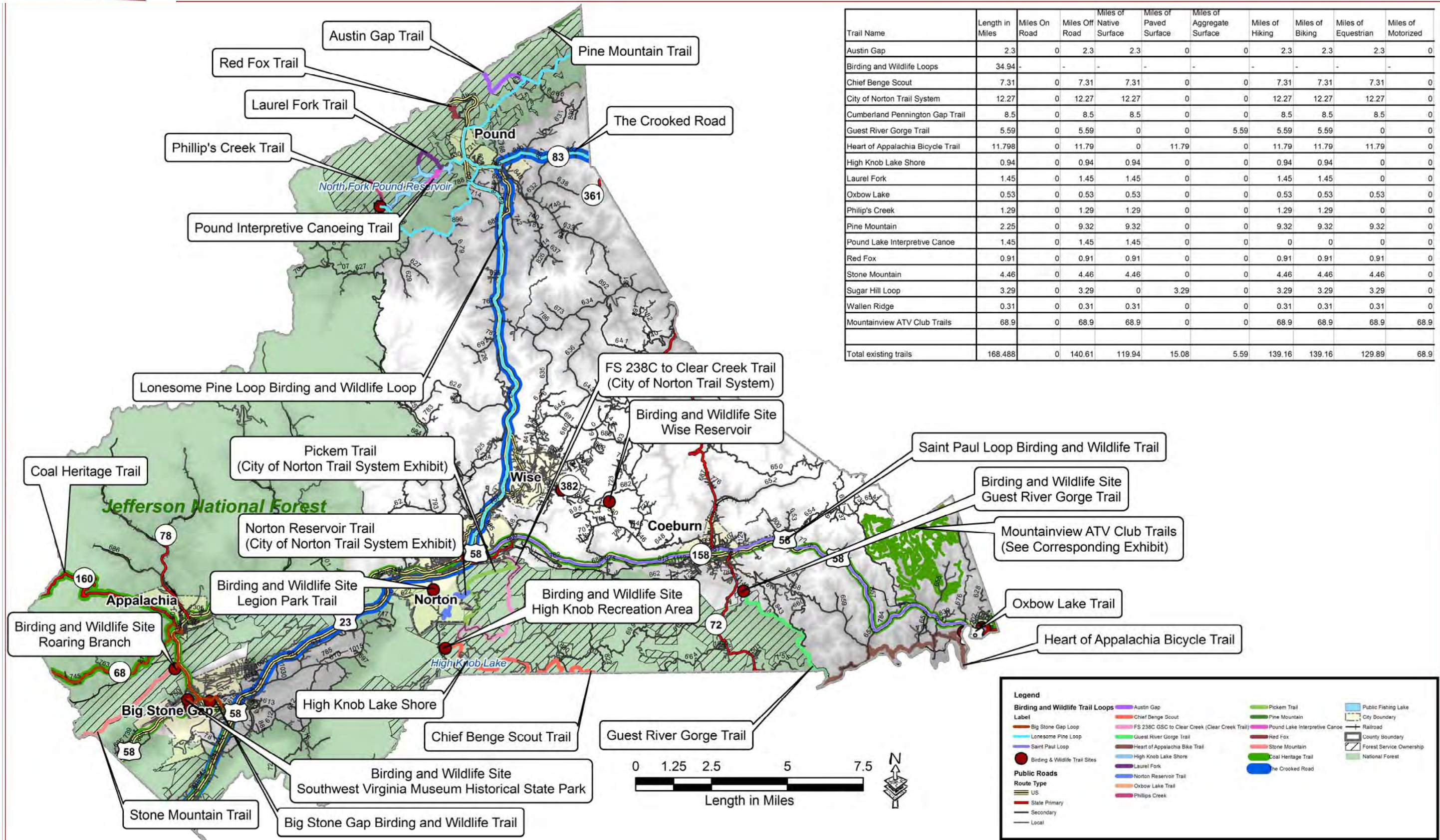
**Recreational Planning Regions: Lenowisco - Region 1** (286)  
Counties: Scott/City of Norton/Lee/Wise





# WISE COUNTY AND THE CITY OF NORTON – Existing Trails

LET'S BUILD A TRAIL SYSTEM TOGETHER and REMEMBER  
Always respect private property rights by first obtaining permission  
to access someone else's land.



Trail Name	Length in Miles	Miles On Road	Miles Off Road	Miles of Native Surface	Miles of Paved Surface	Miles of Aggregate Surface	Miles of Hiking	Miles of Biking	Miles of Equestrian	Miles of Motorized
Austin Gap	2.3	0	2.3	2.3	0	0	2.3	2.3	2.3	0
Birding and Wildlife Loops	34.94	-	-	-	-	-	-	-	-	-
Chief Benge Scout	7.31	0	7.31	7.31	0	0	7.31	7.31	7.31	0
City of Norton Trail System	12.27	0	12.27	12.27	0	0	12.27	12.27	12.27	0
Cumberland Pennington Gap Trail	8.5	0	8.5	8.5	0	0	8.5	8.5	8.5	0
Guest River Gorge Trail	5.59	0	5.59	0	0	5.59	5.59	5.59	0	0
Heart of Appalachia Bicycle Trail	11.798	0	11.79	0	11.79	0	11.79	11.79	11.79	0
High Knob Lake Shore	0.94	0	0.94	0.94	0	0	0.94	0.94	0	0
Laurel Fork	1.45	0	1.45	1.45	0	0	1.45	1.45	0	0
Oxbow Lake	0.53	0	0.53	0.53	0	0	0.53	0.53	0.53	0
Phillip's Creek	1.29	0	1.29	1.29	0	0	1.29	1.29	0	0
Pine Mountain	2.25	0	9.32	9.32	0	0	9.32	9.32	9.32	0
Pound Lake Interpretive Canoe	1.45	0	1.45	1.45	0	0	0	0	0	0
Red Fox	0.91	0	0.91	0.91	0	0	0.91	0.91	0.91	0
Stone Mountain	4.46	0	4.46	4.46	0	0	4.46	4.46	4.46	0
Sugar Hill Loop	3.29	0	3.29	0	3.29	0	3.29	3.29	3.29	0
Wallen Ridge	0.31	0	0.31	0.31	0	0	0.31	0.31	0.31	0
Mountainview ATV Club Trails	68.9	0	68.9	68.9	0	0	68.9	68.9	68.9	68.9
<b>Total existing trails</b>	<b>168.488</b>	<b>0</b>	<b>140.61</b>	<b>119.94</b>	<b>15.08</b>	<b>5.59</b>	<b>139.16</b>	<b>139.16</b>	<b>129.89</b>	<b>68.9</b>

**Legend**

**Birding and Wildlife Trail Loops**

- Label
- Big Stone Gap Loop
- Lonesome Pine Loop
- Saint Paul Loop
- Birding & Wildlife Trail Sites
- Pickem Trail
- Pine Mountain
- FS 238C GSC to Clear Creek (Clear Creek Trail)
- Pound Lake Interpretive Canoe
- Red Fox
- Stone Mountain
- Coal Heritage Trail

**Public Roads**

Route Type

- US
- State Primary
- Secondary
- Local
- High Knob Lake Shore
- Norton Reservoir Trail
- Oxbow Lake Trail
- Phillips Creek
- Public Fishing Lake
- City Boundary
- Railroad
- County Boundary
- Forest Service Ownership
- National Forest

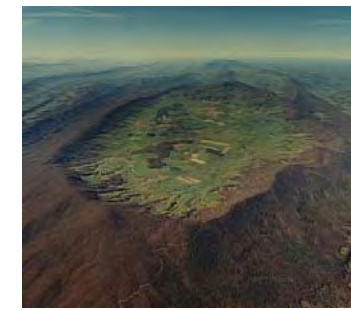
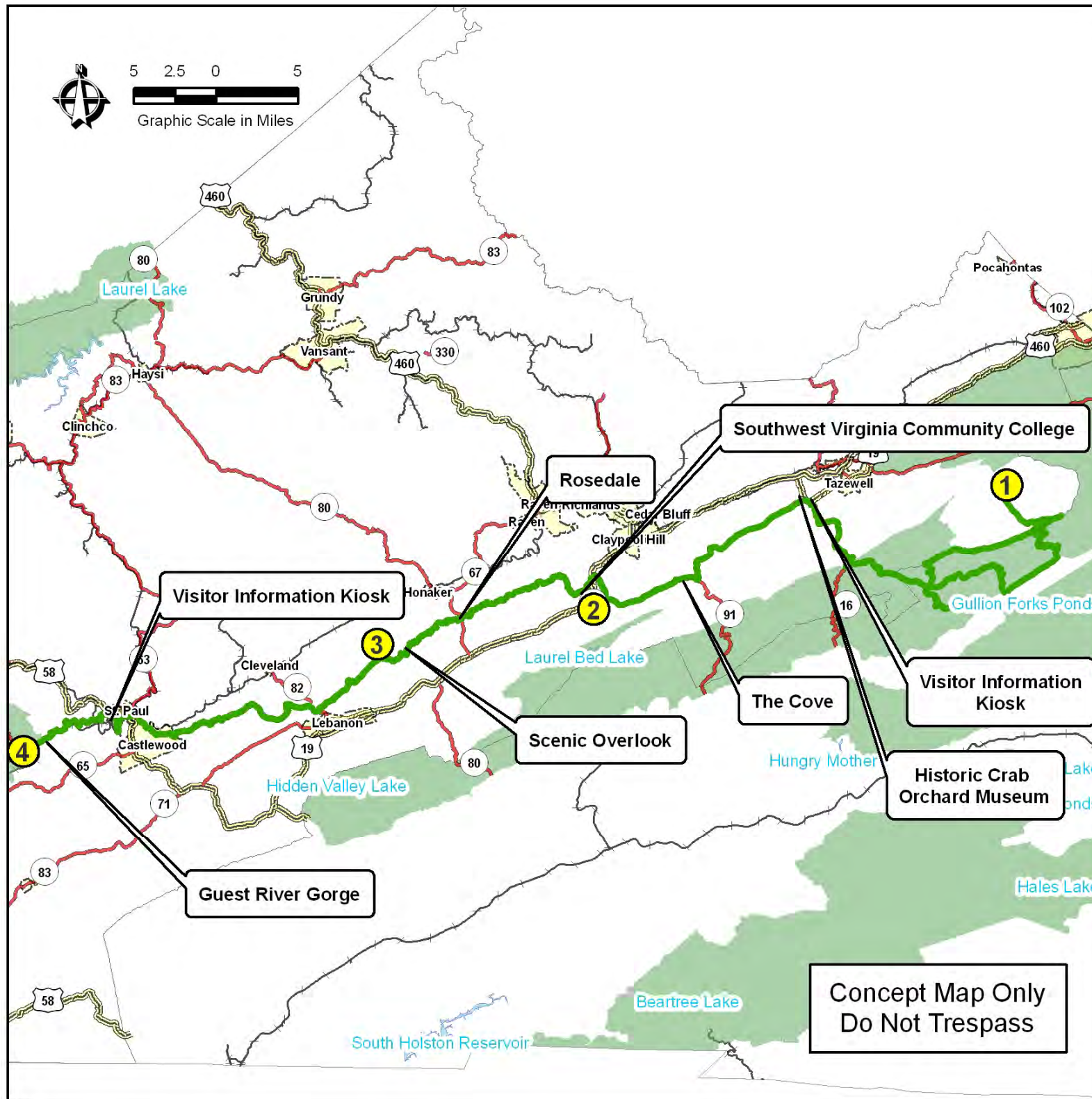






# HEART OF APPALACHIA BICYCLE and DRIVING TRAIL (TAZEWELL, RUSSELL, WISE, DICKENSON)- Existing

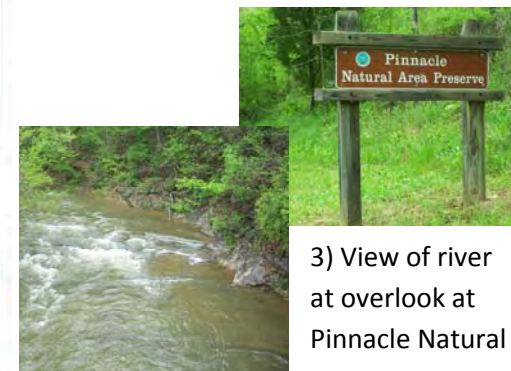
LET'S BUILD A TRAIL SYSTEM TOGETHER and REMEMBER  
Always respect private property rights by first obtaining permission  
to access someone else's land.



1.) Burke's Garden



2.) Southwest Virginia Community College



3) View of river at overlook at Pinnacle Natural Area Preserve.



4.) Guest River Gorge Trailhead

### DESCRIPTION:

This route offers back roads, rails to trails, single track, historic sites, a natural preserve area, wilderness area, Amish general store, a pub, a swinging bridge, three scenic rivers, farms and coal country, and gorgeous views in Virginia's least crowded, friendliest region, the far southwestern counties of Tazewell, Bland, Russell, and Wise.

A tour of Virginia's mountain biking scene in the western-most part of the state includes the Mount Rogers Loop in the Mount Rogers National Recreation Area near Damascus, which is a 115,000-acre wilderness region with more than 400 miles of trails, some of them exceedingly difficult and some climbing to Mount Rogers at 5,729 feet. The loop system has 8 miles of trails, winding over creeks, through valley meadows and across some of southwest Virginia's most impressive mountain peaks.

### LENGTH, TYPE OF TRAIL:

The Heart of Appalachia Bicycle Trail extends 128 miles from Burke's Garden to the Guest River Gorge. Portions of the trail are intended for bicycle, walking and automobile driving.

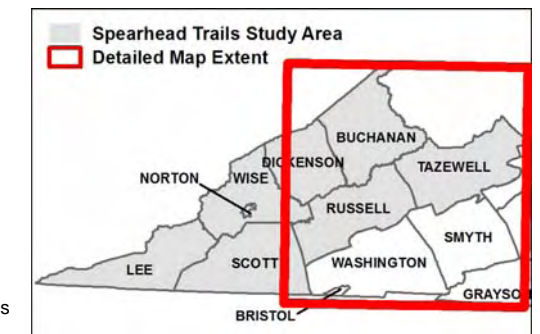
### CONNECTIONS & DESTINATIONS:

From Burke's Garden to Guest River Gorge, crosses Route 80 in Russell County.

See next page for more on this.

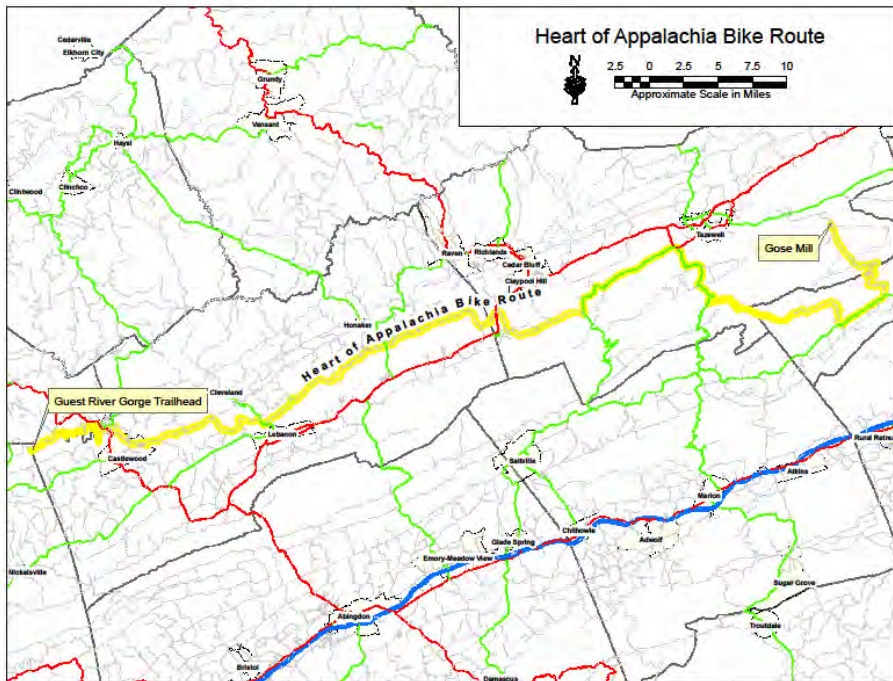
### Legend

- Proposed Trail
- Public Roads**
- Route Type**
- US
- VA
- Local
- Unclassified
- Railroad
- National Forest
- Public Fishing Lakes
- City Boundary





## THE HEART OF THE APPALACHIA BIKE ROUTE & DRIVING TOUR



The Heart of Appalachia Bike Route is 128 miles of roads and trails in Tazewell, Bland, Russell and Wise counties. The route takes cyclists through some of the most beautiful mountain scenery in southwest Virginia, and it provides a variety of terrain and surfaces, including paved and gravel roads, rail-trails and single-track side trips.

Begin in Burkes Garden, a mountain-ringed bowl 10 miles in diameter that contains some of the most fertile farmland in the state. From there, follow the route along sparsely traveled roads in the Jefferson National Forest, across U.S. Bicycle Route 76 in Russell County, to the end at the Guest River Gorge Trail near Coeburn. Forty miles of side-trails provide access to spectacular natural features such as Russell Creek Falls and The Pinnacle at Big Cedar Falls.

This is Clinch River country. The Heart of Appalachia route offers vistas of mountain valleys and a river crossing on a swinging suspension bridge. Since the ride uses both paved and unpaved secondary roads, experienced riders say that knobby tires on a road bike or hybrid tires on a mountain bike are the way to go. Approach the Heart of Appalachia as a self-supported ride; there are few businesses along the way to provide supplies. Plan ahead, and stock up in the towns of Tazewell, Lebanon and St. Paul.

The Heart of Appalachia Bike Route is the only state bicycle route in Virginia. It was officially recognized by the General Assembly in 1999, when legislators allocated \$50,000 to provide signage for the bike route and scenic drive in an effort to promote tourism and economic development.

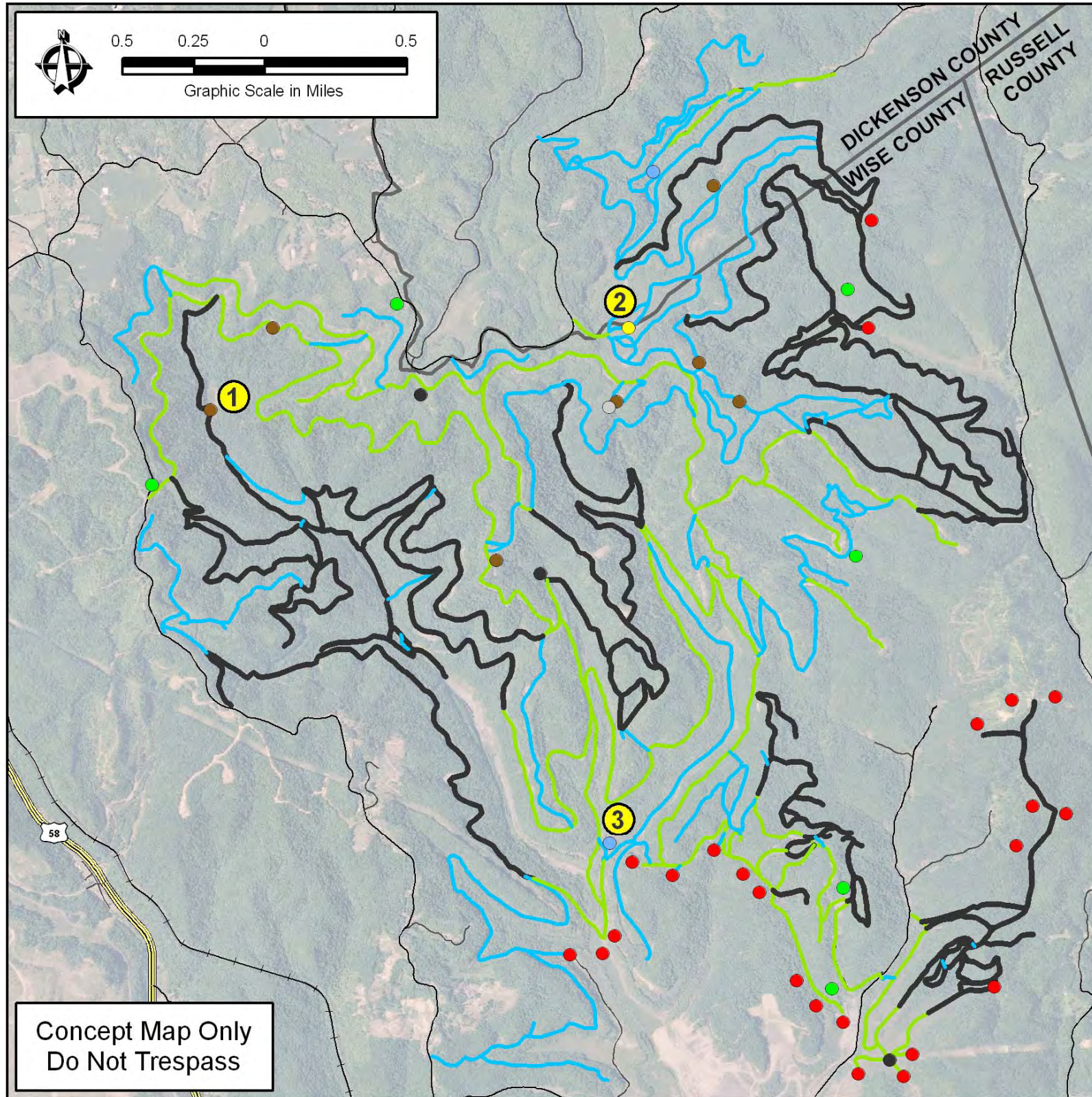
*Information obtained from <http://www.virginia.org/site/features.asp?featureid=364>*





# MOUNTAINVIEW ATV CLUB TRAIL SYSTEM (WISE/DICKENSON COUNTIES)

LET'S BUILD A TRAIL SYSTEM TOGETHER and REMEMBER  
Always respect private property rights by first obtaining permission  
to access someone else's land.



1) Mud Hole



2) Lookout



3) Pond

**DESCRIPTION:** The Mountainview ATV Club Trail System in Clintwood Virginia currently maintains and oversees more than 100 miles of multi-use trail in the southeast corner of Wise County. The trails are only open to club members only. The club currently has over 250 members. Their goals are to "open more trails for ATV use and to promote tourism in order to generate revenues to aid the local economy."

The trails are rated easy up to most difficult to accommodate a wide variety of riders, whether experienced or inexperienced. Members are allowed to ride ATV's, mountain bikes, side-by-sides, and horses. Camping is allowed in the parking lot as there are no facilities to house camping within the trail system.

**LEAD AGENCY/PARTNERSHIPS:**

The Mountainview ATV Club has leased property from Forest Land Group in the Virginia City area. The leased property includes over 4,000 acres with boundaries running along Bull Hill Road, Sandy Ridge Road, running into West Dante, and along Honey Branch Road, back down to Virginia City.

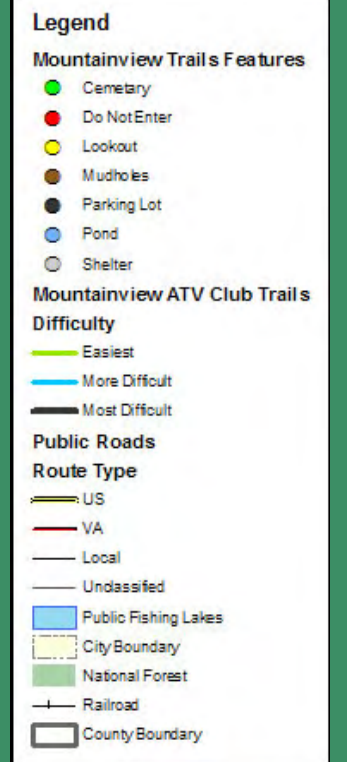
**LENGTH/TYPE OF TRAIL:**

The Mountainview ATV Club Trail System is approximately 102 miles long. It is multi-use trail system with an all natural surface that accommodates ATV's, bikes, UTV's horses, hikers.

The trails are located primarily in Wise County, although portions stretch into Dickenson and Russell counties.

**CONNECTIONS/DESTINATIONS:**

The Mountainview ATV Club Trail System is currently isolated from outside trail connections and gated to keep access private. This may change when system is adopted into the Spearhead Trail System which is being proposed.







# WISE COUNTY AND THE CITY OF NORTON – Proposed Trails

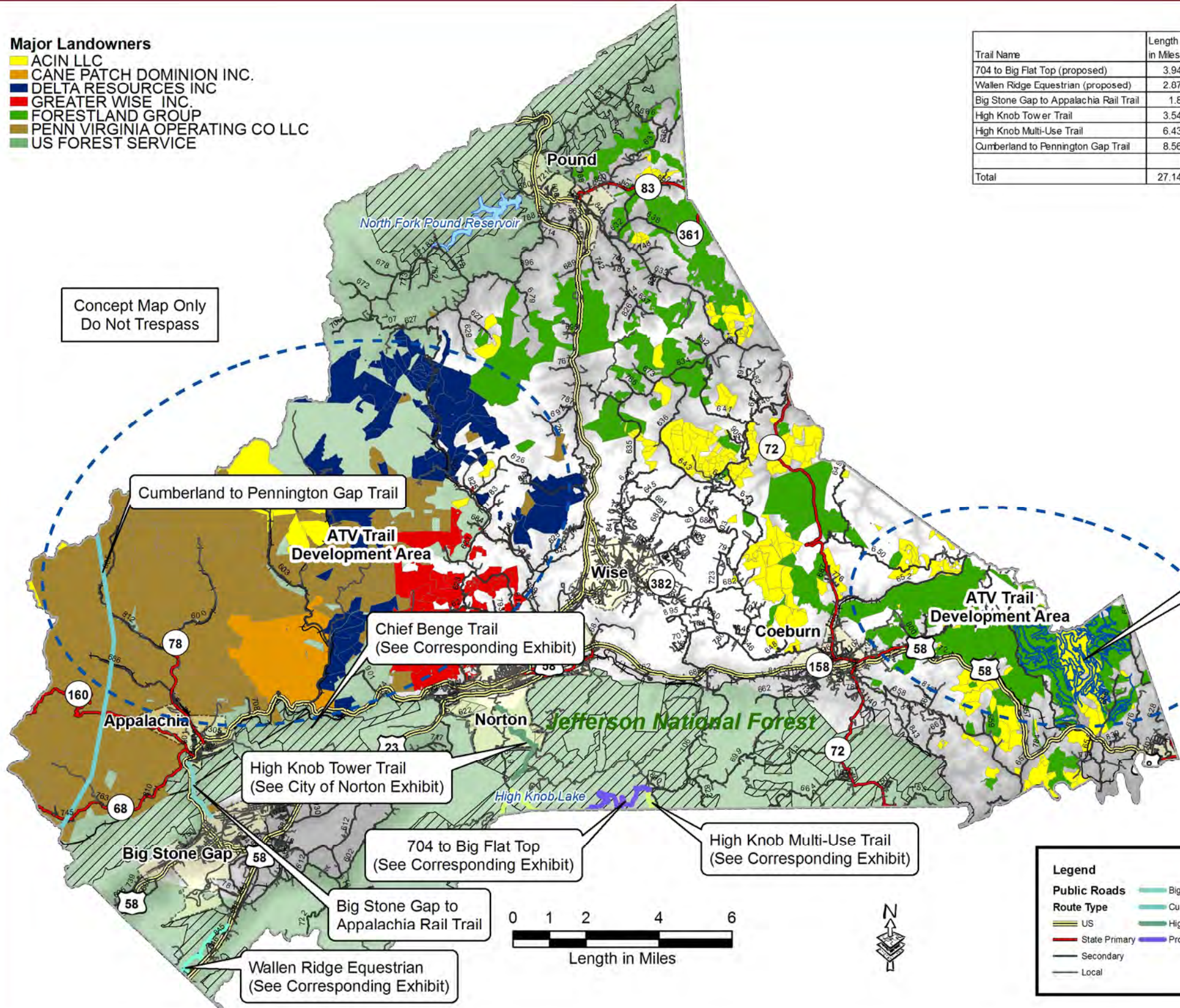
LET'S BUILD A TRAIL SYSTEM TOGETHER and REMEMBER  
Always respect private property rights by first obtaining permission  
to access someone else's land.

### Major Landowners

- ACIN LLC
- CANE PATCH DOMINION INC.
- DELTA RESOURCES INC
- GREATER WISE INC.
- FORESTLAND GROUP
- PENN VIRGINIA OPERATING CO LLC
- US FOREST SERVICE

Trail Name	Length in Miles	Miles On Road	Miles Off Road	Miles of Native Surface	Miles of Paved Surface	Miles of Aggregate Surface	Miles of Hiking	Miles of Biking	Miles of Equestrian	Miles of Motorized
704 to Big Flat Top (proposed)	3.94	-	-	-	-	-	-	-	-	-
Wallen Ridge Equestrian (proposed)	2.87	-	-	-	-	-	-	-	-	-
Big Stone Gap to Appalachia Rail Trail	1.8	-	-	-	-	-	-	-	-	-
High Knob Tower Trail	3.54	-	-	-	-	-	-	-	-	-
High Knob Multi-Use Trail	6.43	-	-	-	-	-	-	-	-	-
Cumberland to Pennington Gap Trail	8.56	-	-	-	-	-	-	-	-	-
<b>Total</b>	<b>27.14</b>									

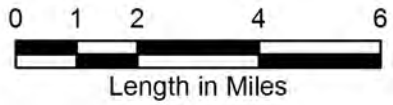
Concept Map Only  
Do Not Trespass



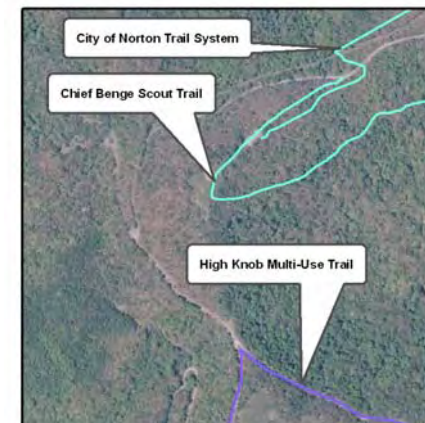
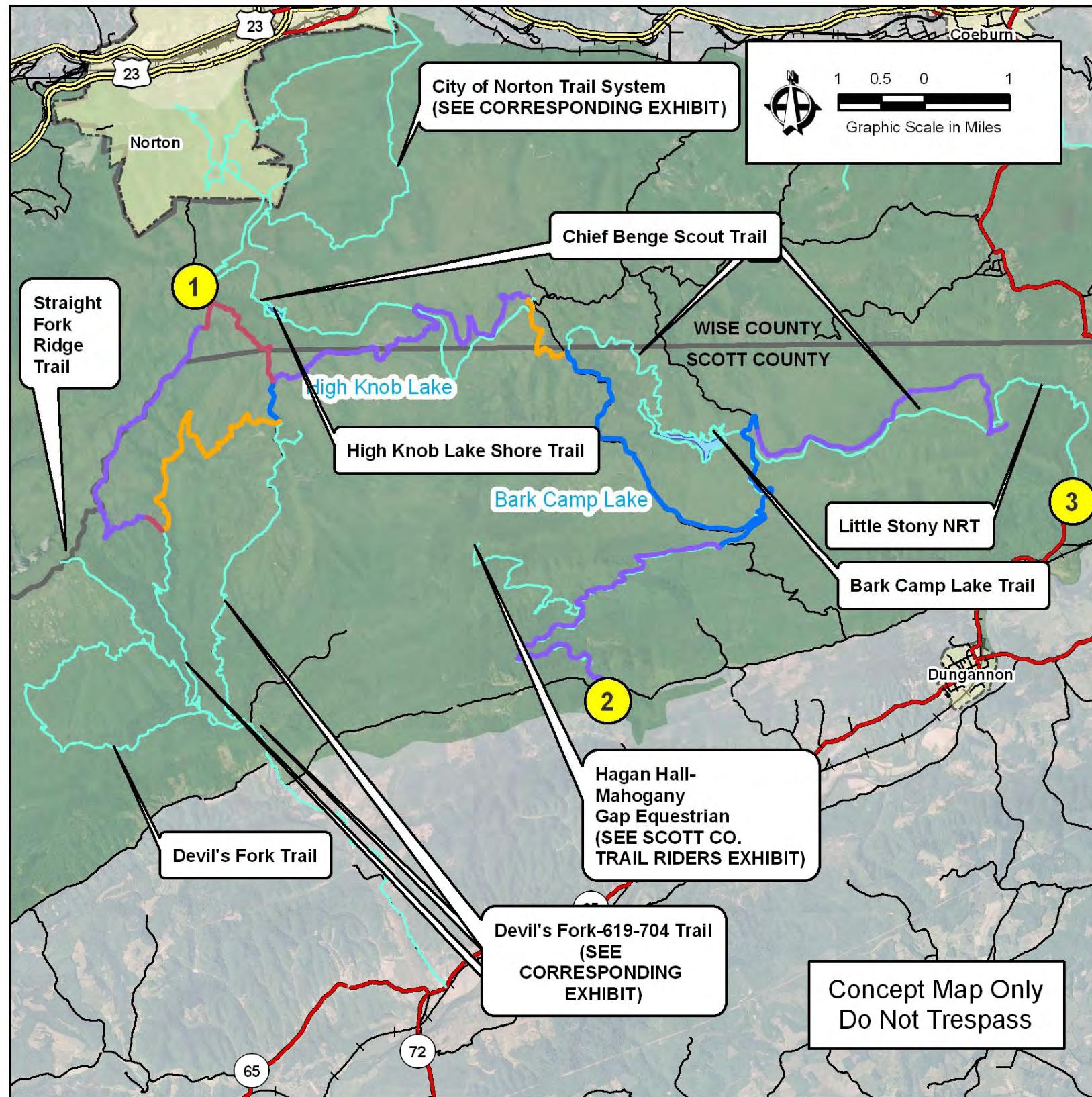
Incorporate Mountainview ATV Club Trails into Spearhead System and Expand To Coeburn and Dante

**Legend**

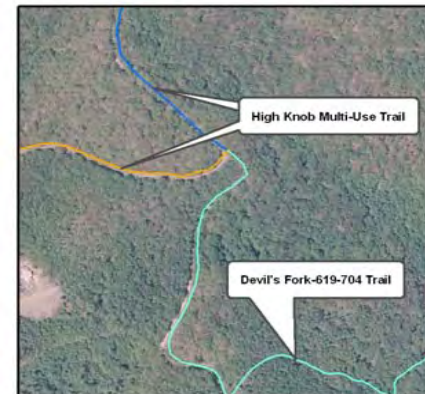
<b>Public Roads</b>	Big Stone Gap to Appalachia Rail Trail	Mountainview ATV Club Trails	Public Fishing Lake
<b>Route Type</b>	Cumberland to Pennington Gap Trail (L&N)	Wallen Ridge Equestrian	City Boundary
US	High Knob Tower Trail	HighKnobMulti	Railroad
State Primary	Proposed/704 to Big Flat Top		County Boundary
Secondary			Forest Service Ownership
Local			National Forest



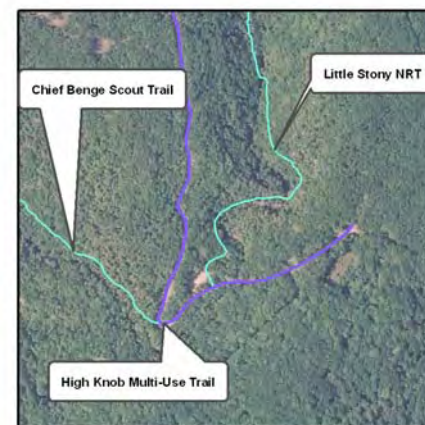




1) Possible Connection Between City of Norton Trail System and High Knob Multi-use Trail.



2) Possible Trail Connectivity from Multi-Use Trail.



3) Trailhead Area and Possible connection to Little Stony NRT

**DESCRIPTION:**

The proposed High Knob Multi-Use Trail is a 36 mile long trail that can serve as a possible connector from The City of Norton into the northern most area of Russell County into the Devil's Fork and Straight Fork Ridge Trails as well as the Proposed Devil's Fork-619-704 Loop.

The proposed High Knob Multi-Use Trail has the potential to be an attractive expansion to the City of Norton Trail System, allowing a connection from the City of Norton to other trail opportunities that reside elsewhere in the surrounding areas. Along with the existing trail system belonging to the City of Norton, the addition of the High Knob Multi-Use Trail would generate economic stimulation within the City as it becomes the trailhead location, thus informally designating the city as the gateway to the trails that lie in the southern adjoining counties.

**CURRENT CONDITIONS AND DEVELOPMENT NEEDS**

The 36 mile trail is proposed to follow some existing road beds, but also will require construction and reconstruction to make the trail functional as designed.

**LENGTH/TYPE OF TRAIL**

The proposed High Knob Multi-Use Trail is a 36 mile long trail that is designed for hiking and biking

**CONNECTIONS AND DESTINATIONS**

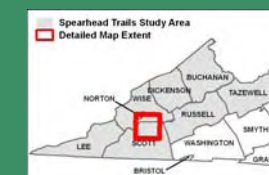
The proposed trail has the potential to link the City of Norton Trail System, just south of the city, with trail related opportunities in the northern area of Russell County and the southeast portion of Wise County.

**TRAIL SYSTEM INCLUDES:**

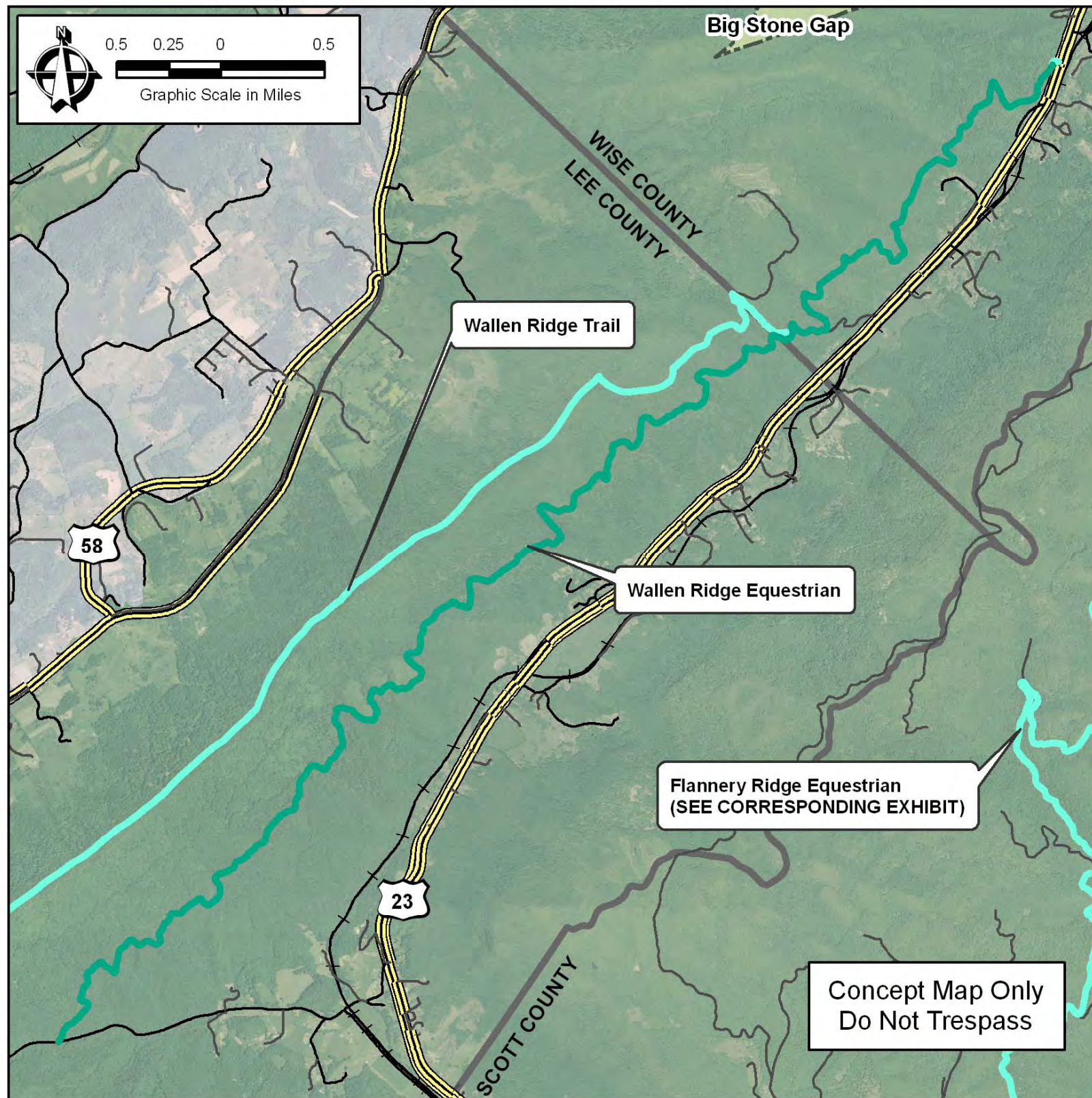
- Chief Benge Scout Trail
- Straight Fork Ridge Trail
- High Knob Lake Shore Trail
- Bark Camp Lake Trail
- Devil's Fork Trail
- City of Norton Trail System
- Devil's Fork 619-704 Trail
- Hagan Hall-Mahogany Gap Trail
- Little Stony NRT

**Legend**

- City of Norton Trail System
- High Knob Multi-Use Trail**
- FDR Proposed For Use
- Proposed New Construction
- Proposed Reconstruction
- State Route Proposed For Use
- <all other values>
- Public Roads**
- Route Type**
- US
- VA
- Local
- Public Fishing Lakes
- City Boundary
- Railroad
- National Forest
- County Boundary







**DESCRIPTION:**  
Being part of the proposed Scott County Trail Riders' Equestrian Trail System, the Wallen Ridge Equestrian Trail provides an alternate trail riding opportunity for horseback riders in the proposed area.

The Wallen Ridge Equestrian Trail, shown in the map to the left, parallels the existing Wallen Ridge Trail. This equestrian- dedicated trail will provide scenic trail rides leading into both Lee and Wise Counties.

**LEAD AGENCY/PARTNERS:**  
Scott County Trail Riders. Cooperation from the National Forest Service would be required since the entire trail is located within the boundaries of the Jefferson National Forest.

**LENGTH/TYPE OF TRAIL:**  
The proposed Wallen Ridge Equestrian Trail is approximately 9.5 miles in length and is intended for horseback riding only.

**CURRENT CONDITIONS:**  
The proposed trail follows along Wallen Ridge on an existing U.S. Forest Service road. Establishing the trail would cost little to nothing since the trail will basically be the using the old road bed.

The only notable costs would be for adding trail signage as well as general maintenance costs.

**CONNECTIONS:**  
The trail connects Lovelady Gap to Big Stone Gap running Along Wallen Ridge into both Lee and Wise counties.

**Legend**

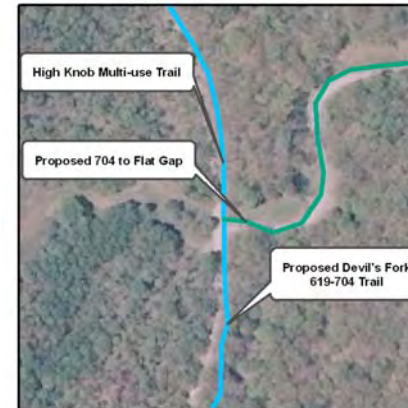
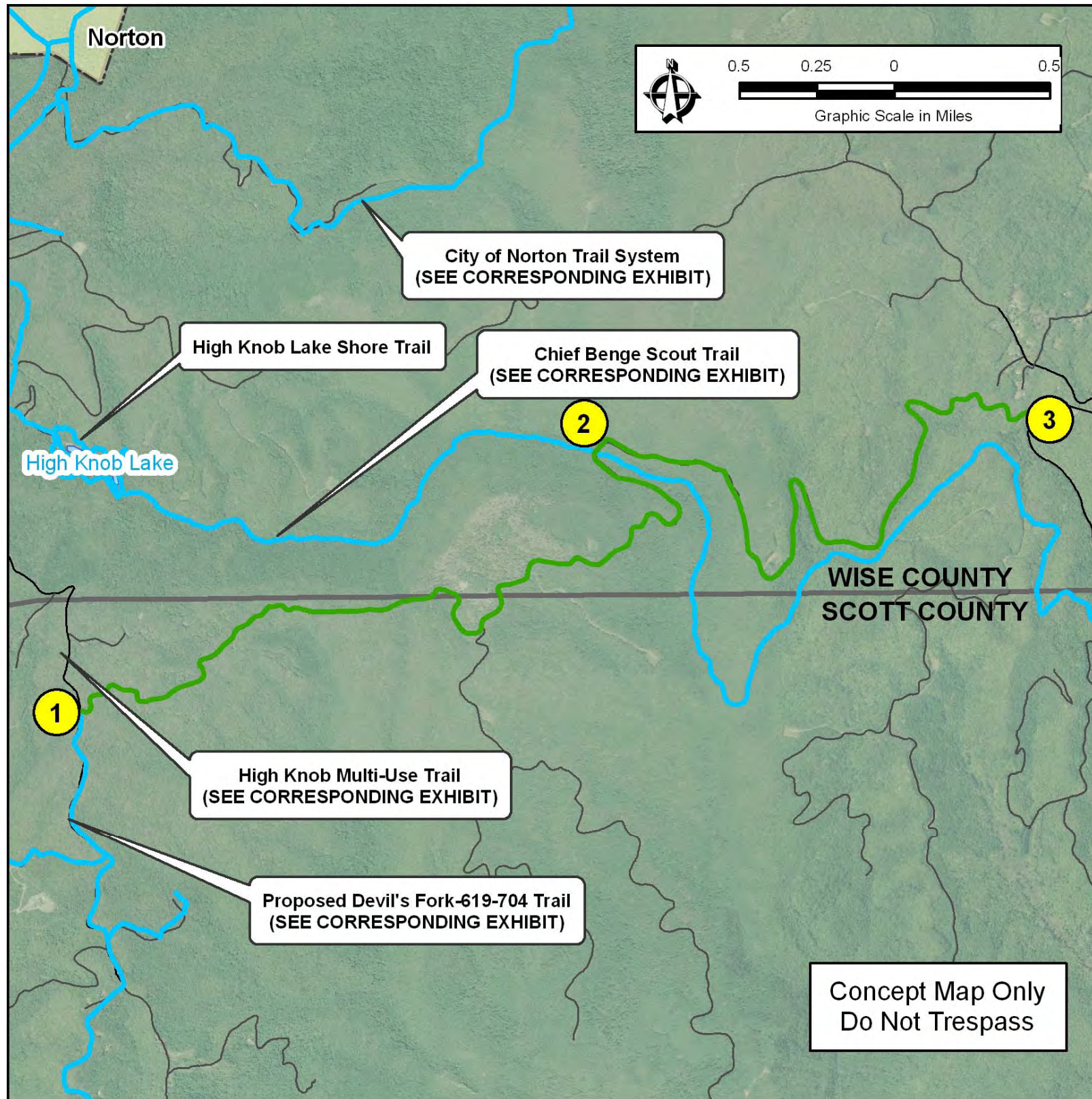
- Wallen Ridge Equestrian
- Flannery Ridge Equestrian
- Trail Corridors

**Public Roads**

**Route Type**

- US
- VA
- Local
- Unclassified
- Public Fishing Lakes
- City Boundary
- + Railroad
- National Forest
- County Boundary

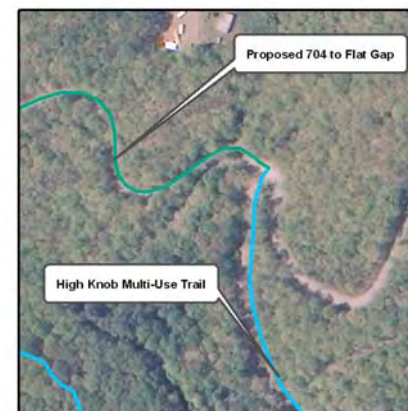




1.) Intersection of 704 to Flat Gap Trail with High Knob Multi-Use Trail and Devil's Fork-619-704 Trail



2.) Intersection of Chief Bengé Scout Trail and 704 to Flat Gap Trail



3.) Intersection of Chief Bengé Scout Trail, High Knob Multi-Use Trail and 704 to Flat Gap Trail

**DESCRIPTION:**

The Scott County Trail Riders' proposed 704 to Flat Gap Equestrian Trail is essentially an addition to the trail complex to the south of the City of Norton. The trail interweaves with the Chief Bengé Scout Trial, which is a multi-use trail as compared to the proposed trail which is intended for equestrian usage. The proposed trail provides an alternative, for horse riders, to the Chief Bengé Scout Trail that is located in the same vicinity.

The addition of the proposed trail to the existing complex of trails will provide equestrian trail riders a gate way of sorts to the proposed horse trails that lie to the south in Scott County. The trail is located on existing forest service roads and can be easily adapted for the proposed usage with little funding.

With the addition of this proposed equestrian trail to the existing trails, as well as other proposed horse trails nearby, trail enthusiasts will have many more trail related options and opportunities that originate from the City of Norton.

**CONNECTIONS & DESTINATIONS:**

The proposed trail is projected to link, on a small scale, the High Knob Multi-Use Trail with a local roadway and trail related opportunities in the Flat Gap Area. Ultimately, the proposed trail is part of a large system of trails that have their origin in the City of Norton and link it with the northernmost part of Scott County and the trail opportunities thereof.

**LEAD AGENCY/PARTNERS:**  
Scott County Trail Riders

**LENGTH/TYPE OF TRAIL:**  
The proposed trail is approx. 5.6 miles long, and is intended for equestrian usage.

**TRAIL LOCATION:**  
The proposed trail is currently located entirely on US Forest Service Roadways.

**Legend**

- Proposed/704 to Big Flat Top
- Trail Corridors

**Public Roads**

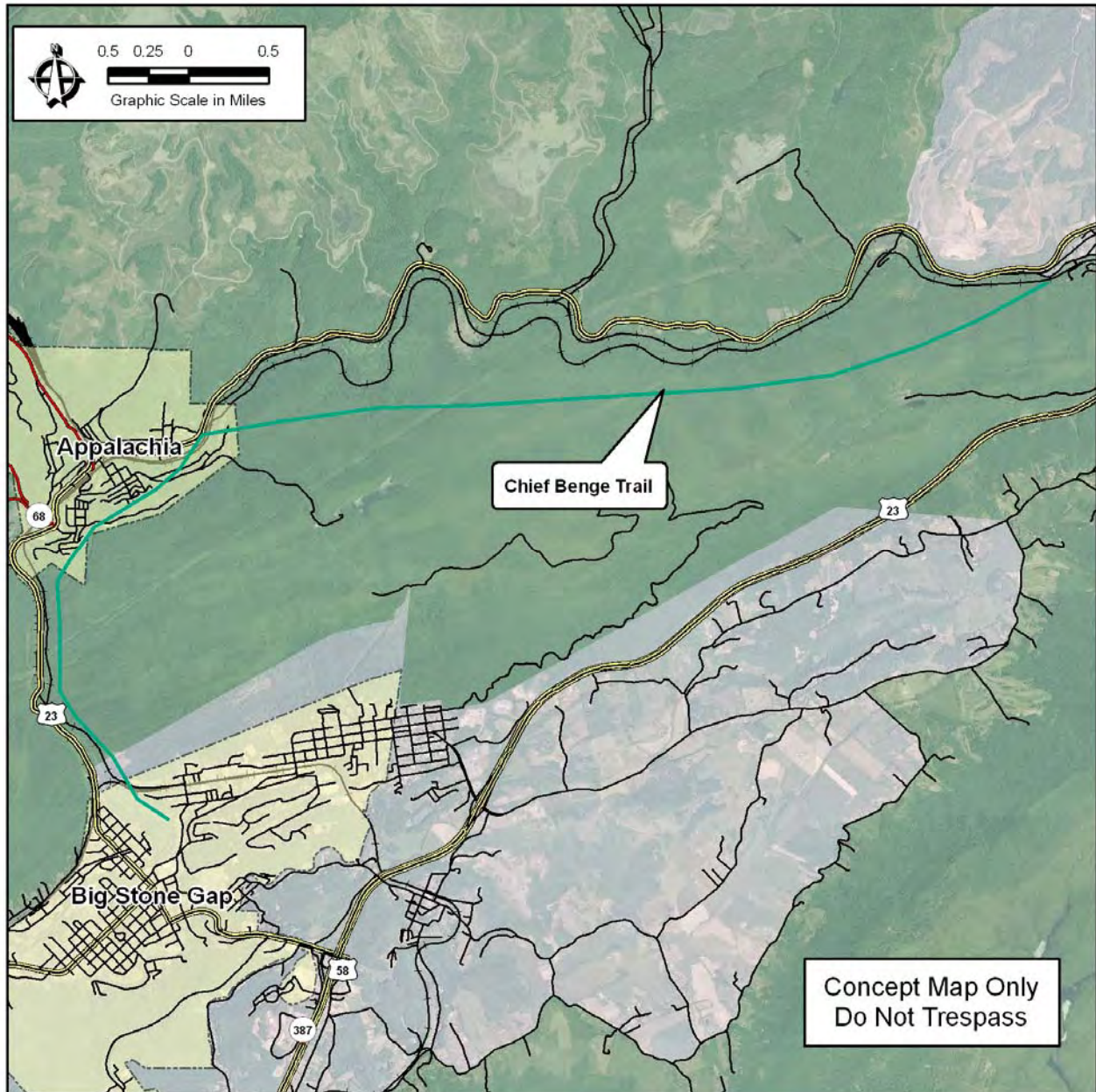
**Route Type**

- US
- VA
- Local
- Unclassified

- Public Fishing Lakes
- City Boundary
- Railroad
- County Boundary
- National Forest



## PROPOSED CHIEF BENGE TRAIL (WISE COUNTY)



**DESCRIPTION:**

The proposed Chief Benge Trail is located in Wise County which begins in Big Stone Gap and parallels Hwy 23 into the Town of Appalachia then heads east towards the Country Cabin II near the City of Norton.

**LENGTH/TYPE OF TRAIL:**

This multi-use trail will be approximately 8.5 miles in length.





# CLINCH RIVER BLUEWAY – St. Paul to Dungannon

LET'S BUILD A TRAIL SYSTEM TOGETHER and REMEMBER  
Always respect private property rights by first obtaining permission  
to access someone else's land.

