

INVENTORY OF EXISTING AND PROPOSED TRAILS

AN OVERVIEW OF EXISTING AND PROPOSED TRAILS IN TAZEWELL COUNTY

ATV Trails

Potential

Counties: Tazewell

ATV Trails already exist in the northern portion of the county that connect with trails in both Buchanan Co. and West Virginia Trails. None of the existing trails in Tazewell are sanctioned trails. Huge potential for developing motorized trails and connecting with West Virginia's Hatfield and McCoy Trail System and other WV trails. Recommended trailheads include the Town of Pocahontas and near the communities of Richlands, Jewel Ridge and Bandy areas.

Bike Route & Scenic Drive: Heart of Appalachia Bike Route Exists (88)

Counties: Tazewell/Russell/Wise

<http://www.virginia.org/site/description.asp?AttrID=15992>

The Heart of Appalachia Bike Route runs from Burke's Garden in Tazewell County to Guest River Gorge in Wise County on roughly half paved/half gravel roads. This 125 mile (with 40 miles of side trails) back road and back country biking excursion offers back roads, rails to trails, single track, historic sites, a natural preserve area, wilderness area, Amish general store, a pub, a swinging bridge, three scenic rivers, farms and coal country, and gorgeous views in Virginia's less crowded, more agriculture and mountainous region of the state. This route crosses the Trans-America bike route along Route 80 in Russell County. The section through Tazewell County is the Garden Loop which takes Route 727, 667, 666, 625. Including side trips, the round trip is 18 miles.

Driving Tour: Fincastle/Cumberland Gap Turnpike

County: Tazewell

The Fincastle/Cumberland Gap Turnpike was established in 1834 by the Virginia General Assembly. The route begins by traveling on Route 11 to Route 220 north to Fincastle. The eastern terminus leaving Fincastle in Botetourt County on State 606, left on west Route 615 in Craig County through the Town of New Castle, thence on Route 42 to Giles County, right on 460, thence left on Scenic Byway Route 61 through Bland County west to Tazewell County, left onto west Route 19/460 through Tazewell County, thence on Route 19 through Russell County and the Town of Lebanon, thence west to Route 71, Right on Alt 58, Left on Route 65 through Dungannon and Fort Blackmore, Right on Route 650 through Rye Cove, then right on Route 58 to connect with the Daniel Boone Wilderness Trail, thence connecting to the Cumberland Gap at the Virginia State Line.

Historical Walking Tour: Richlands Historical Walking Tour Exists

County: Tazewell

<http://town.richlands.va.us/>

Self-guided walking tour of historic downtown Richlands.

Historical Walking Tour: Historic Pocahontas Walking Tour Exists

County: Tazewell

Self-guided walking tour of historic Pocahontas starts at the caboose in Laurel Meadows Park.

INVENTORY OF EXISTING AND PROPOSED TRAILS

Hiking Trail: **Roaring Fork Trail** Exists
County: Tazewell
Primarily used as an access trail to some excellent trout fishing. Take Forest Service Road 222 off of Route 16. Hike is a bit difficult and primitive. Distance: 2.3 miles

Nature Trail: **Witten Lake Nature Trail** Exists
County: Tazewell
Witten Lake Recreation Area offers a nature hike around the lake and into the woods.

Rail Trail: **Town of Pocahontas** In the works
County: Tazewell
Norfolk Southern donated 1.8 mile portion of rail line which extends from the Town of Pocahontas to Blue Stone Junction in Mercer County WV. In addition to the rail line, the rail yard and old train station was also donated. Funding Source: In 2005, \$400,000 was awarded through Congress to construct a 1.8 mile pedestrian/bicycle trail.

Walking Trail: **Cedar Bluff Overlook Trail** Exists
County: Tazewell http://www.cedarbluffva.org/discover/overlook_park.aspx
Overlooking Cedar Bluff VA, this trail follows a VA DOT constructed road cut which includes benches enroute to the observation deck at the summit. Interpretive signs along the way showcase the uniqueness of The Clinch River, the 1998 Chemical Spill, the geology of the Route 460 road cut and the adjoining Nature Conservancy property. Distance: .25 miles to Overlook.

Walking Trail: **Clinch River Walking Trail** Exists
County: Tazewell <http://town.richlands.va.us/>
The community of Richland offers the Clinch River Walking Trail, a one-mile trail meandering along the Clinch River.

Walking/bicycle trail: **Laurel Meadows Park Trail** Exists
County: Tazewell
7 acres of land in downtown Pocahontas makes up Laurel Meadows Park which includes a 1/2 mile walking/ bicycle trail beside the old track.

Walking /Bicycle Trail: **Pocahontas Walking/Bicycle Trail** In the works
County: Tazewell
A 5-mile pedestrian/bicycle trail starts at Pocahontas Exhibition Mine and Museum. Currently under construction.

National / Virginia Rural Historical District: **Burke's Garden**
County: Tazewell
<http://www.virginia.org/site/description.asp?AttrID=15134>
Sometimes referred to as "God's Thumbprint" because of its view from the air, this mountain-ringed bowl is 10 miles in diameter and filled with some of the most fertile farmland in the state. The area, which is the highest mountain valley in Virginia, was designated a National and Virginia Rural Historical District. The community can be viewed from the Appalachian Trail or by car from state route 623. Visitors can buy baked goods and vegetables, bike on area roads, and hike and hunt in nearby Jefferson National Forest.

INVENTORY OF EXISTING AND PROPOSED TRAILS

The Garden was discovered in the 1740's by James Burke while hunting in the area. The name "Burke's Garden" was given to the valley as a joke in 1748 after Burke planted potato peelings by the campfire of a 1748 surveying party. The next year, a fine crop of potatoes was found.

Public Fishing Lakes: **Laurel Bed Lake** Exists (231)
Counties: Tazewell/Russell

Recreation area: **Potential Recreation Area** Potential (306)
County: Tazewell

Southwest Virginia Community College has a 100 acre tract suitable for some recreational development.

Recreation Area: **Cavitt's Creek Park Recreation Area** Exists
County: Tazewell <http://www.virginia.org/site/description.asp?AttrID=15133>

The 54 acre lake is part of the 164 acre Cavitt's Creek Park. Lake Witten is classified as a "Class A" lake. The Virginia Game Commission stocks trout nine times a year. Open for fishing, camping, picnicking, hiking and boating (only electric motor boats are permitted). The campground has 12 spaces for recreational vehicles but has no electrical hookups. Primitive camping spaces are also available. Boats and paddleboats are available for rent. Summer hours 7am-10pm.

Scenic River: **Big Cedar Creek** Exists (155)
Counties: Tazewell/Russell

Big Cedar Creek from the confluence with the Clinch River 5,8 miles back towards Lebanon has been designated a scenic river.

State Natural Area Preserves: **Lick Creek Natural Area** Exists (251)
County: Tazewell

State Natural Area Preserves: **Red Rock Mountain** Exists (251)
Counties: Tazewell (near)/ Russell (near)

State Park: **Potential State Park** Potential (305)
County: Tazewell

A need exists for additional park land in this region of the state.

DCR Recommendation: Explore options for acquiring land in Tazewell County for a state park in the vicinity of Pait Lick Mt, Knob Mt and Thompson Valley (DCR, 2007)

State WMA: **Clinch Mountain** (also horseback riding, hiking, boating, fishing) Exists (231)
Counties: Tazewell/Russell <http://www.dgif.virginia.gov/wmas/detail.asp?pid=21>

Hunting: deer, bear, turkey, grouse, gray and fox squirrel, rabbit, and wood duck hunters usually enjoy success on these ponds, particularly during the first season that opens each fall. Fishing: Clinch Mountain Wildlife Management Area offers anglers the opportunity to fish roaring mountain streams or the placid, picturesque, 300 acre Laurel Bed Lake. A daily fee is charged for fishing some of the area's waters.

Facilities: There is ample parking space. Two boat ramps are available at Laurel Bed Lake. A shooting range for archery is near the resident manager's house. There is a developed campground on the area and Raven Ridge Campground and B&B is just minutes away. Other popular uses of the area include: horseback riding, wildlife viewing, hiking and nature photography. A wide range of wildflowers attract visitors in the spring.

INVENTORY OF EXISTING AND PROPOSED TRAILS

Map: <http://www.dgif.virginia.gov/wmas/maps/clinchmountain.pdf>

Clinch Mountain WMA is expanding its trails system and will be linking with trails on proposed DOF property on Brumley Mountain, which is currently owned by the Nature Conservancy.

Virginia Birding & Wildlife Trail: Clinch Mountain Loop VBWT Exists

Counties: Tazewell/Russell

<http://www.dgif.virginia.gov/vbwt/loop.asp?trail=2&loop=MCM>

Virginia Birding & Wildlife Trail: Mountain Heritage Loop VBWT Exists

Counties: Tazewell

<http://www.dgif.virginia.gov/vbwt/loop.asp?trail=2&loop=MMH>

OTHER NOTED INFORMATION OR ATTRACTIONS

Archaeological Survey: Portions are good to fair. (132)

Architectural Survey: Portions are excellent to good (132)

Biodiversity Ranking: Ranked very high in areas, high, moderate and outstanding. (247)

Environment Education Facilities: Tazewell High School (176)

Full time parks & recreation director - Yes (267)

Recreational Planning Regions: Cumberland Plateau - Region 2

Includes: Dickenson, Buchanan, Russell, Tazewell

Tourism Features: Historic Downtown Pocahontas Exists

County: Tazewell

Numerous historic sites in Pocahontas

Tourism Features: Pocahontas Exhibition Mine and Museum Exists

County: Tazewell, in Pocahontas

Tourism Features: Graveyard in Ripley's Believe it or Not! Exists

County: Tazewell, in Pocahontas

Tourism Features: Paintlick Petroglyphs Exists

County: Tazewell, in Paintlick area

Tourism Features: Pinnacle Exists

County: Tazewell, limited Access

Tourism Features: Burke's Garden Exists

County: Tazewell, See National/ Virginia Historic District in this section



TAZEWELL COUNTY-Existing Trails

LET'S BUILD A TRAIL SYSTEM TOGETHER and REMEMBER
Always respect private property rights by first obtaining permission
to access someone else's land.

Legend

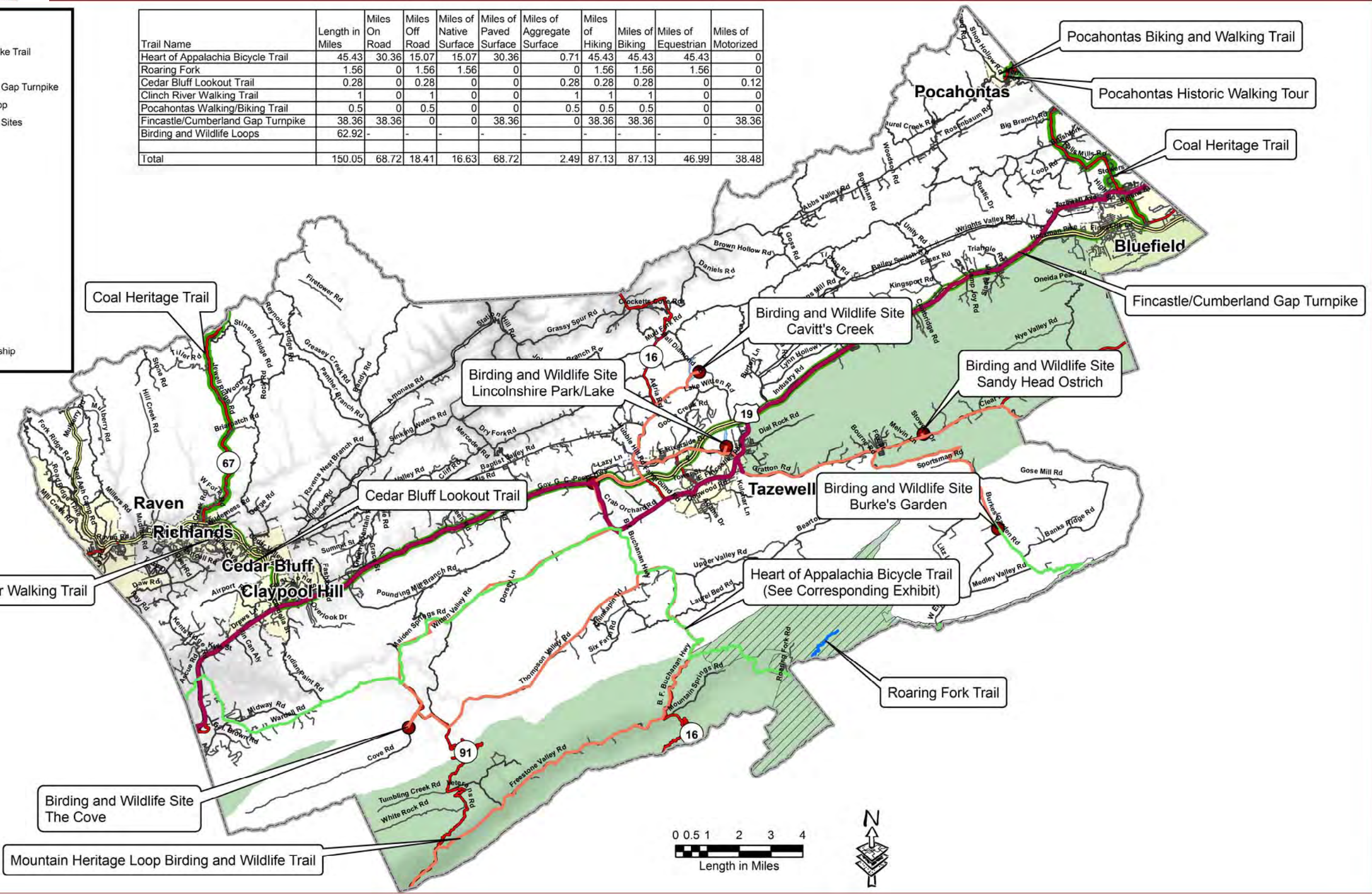
- Heart of Appalachia Bike Trail
- Roaring Fork
- Fincastle/Cumberland Gap Turnpike
- Mountain Heritage Loop
- Birding & Wildlife Trail Sites

Public Roads

Route Type

- US
- VA
- Local
- Unclassified
- Coal Heritage Trail
- Public Fishing Lake
- City Boundary
- Railroad
- County Boundary
- National Forest
- Forest Service Ownership

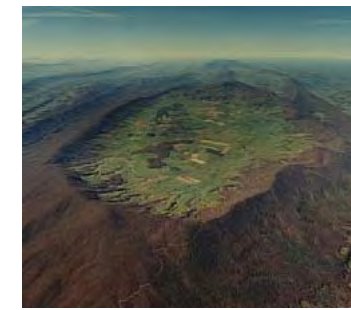
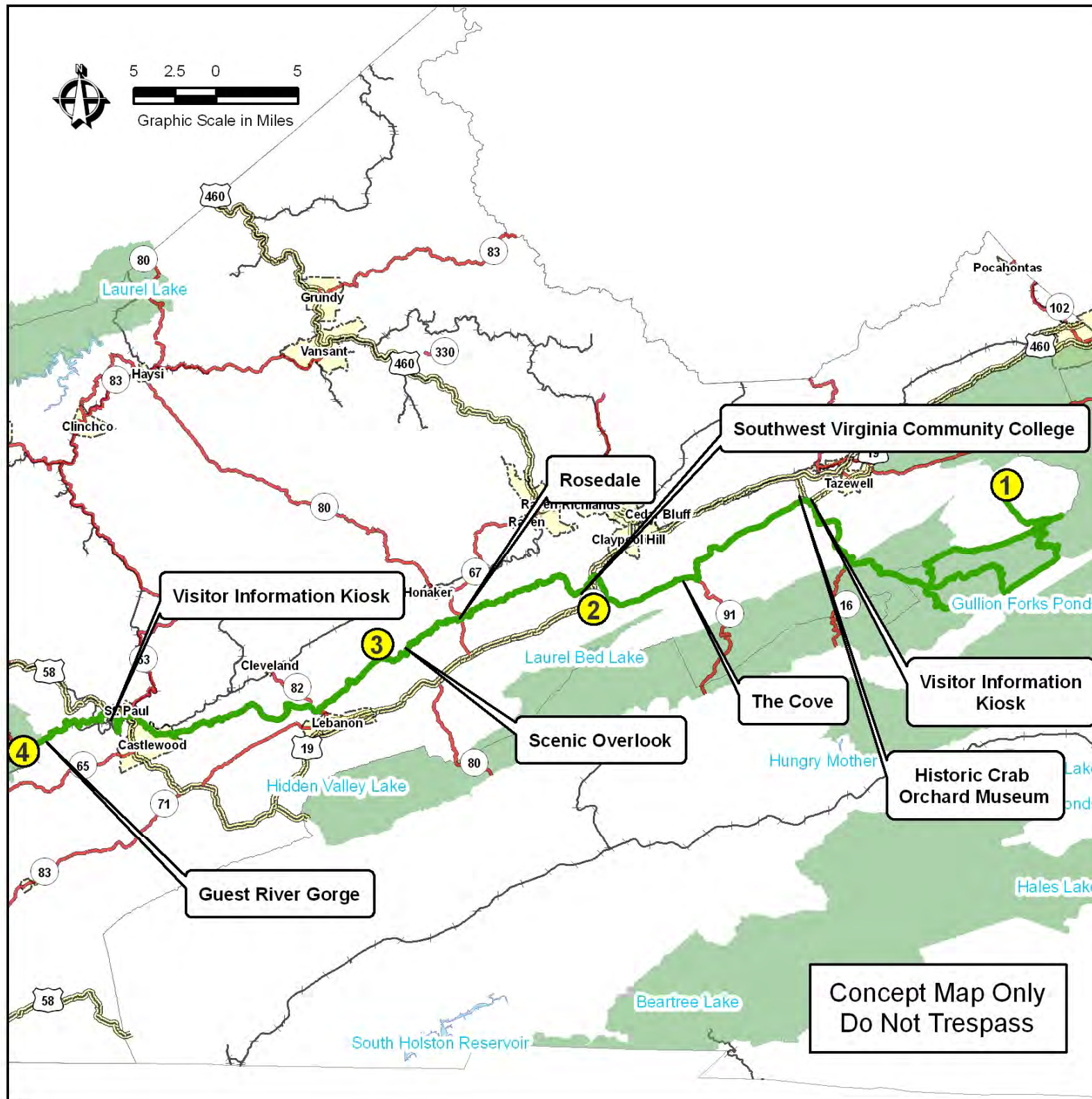
Trail Name	Length in Miles	Miles On Road	Miles Off Road	Miles of Native Surface	Miles of Paved Surface	Miles of Aggregate Surface	Miles of Hiking	Miles of Biking	Miles of Equestrian	Miles of Motorized
Heart of Appalachia Bicycle Trail	45.43	30.36	15.07	15.07	30.36	0.71	45.43	45.43	45.43	0
Roaring Fork	1.56	0	1.56	1.56	0	0	1.56	1.56	1.56	0
Cedar Bluff Lookout Trail	0.28	0	0.28	0	0	0.28	0.28	0.28	0	0.12
Clinch River Walking Trail	1	0	1	0	0	0	1	1	0	0
Pocahontas Walking/Biking Trail	0.5	0	0.5	0	0	0	0.5	0.5	0	0
Fincastle/Cumberland Gap Turnpike	38.36	38.36	0	0	38.36	0	38.36	38.36	0	38.36
Birding and Wildlife Loops	62.92	-	-	-	-	-	-	-	-	-
Total	150.05	68.72	18.41	16.63	68.72	2.49	87.13	87.13	46.99	38.48





HEART OF APPALACHIA BICYCLE and DRIVING TRAIL (TAZEWELL, RUSSELL, WISE, DICKENSON)- Existing

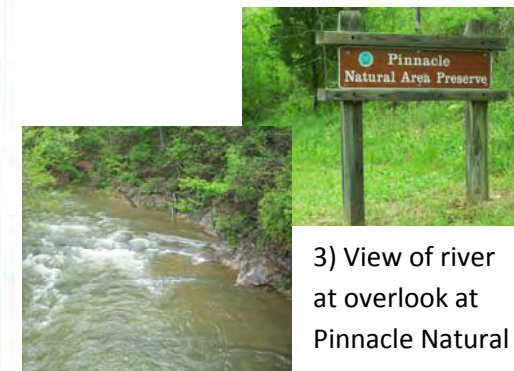
LET'S BUILD A TRAIL SYSTEM TOGETHER and REMEMBER
Always respect private property rights by first obtaining permission
to access someone else's land.



1.) Burke's Garden



2.) Southwest Virginia Community College



3) View of river at overlook at Pinnacle Natural Area Preserve.



4.) Guest River Gorge Trailhead

DESCRIPTION:

This route offers back roads, rails to trails, single track, historic sites, a natural preserve area, wilderness area, Amish general store, a pub, a swinging bridge, three scenic rivers, farms and coal country, and gorgeous views in Virginia's least crowded, friendliest region, the far southwestern counties of Tazewell, Bland, Russell, and Wise.

A tour of Virginia's mountain biking scene in the western-most part of the state includes the Mount Rogers Loop in the Mount Rogers National Recreation Area near Damascus, which is a 115,000-acre wilderness region with more than 400 miles of trails, some of them exceedingly difficult and some climbing to Mount Rogers at 5,729 feet. The loop system has 8 miles of trails, winding over creeks, through valley meadows and across some of southwest Virginia's most impressive mountain peaks.

LENGTH, TYPE OF TRAIL:

The Heart of Appalachia Bicycle Trail extends 128 miles from Burke's Garden to the Guest River Gorge. Portions of the trail are intended for bicycle, walking and automobile driving.

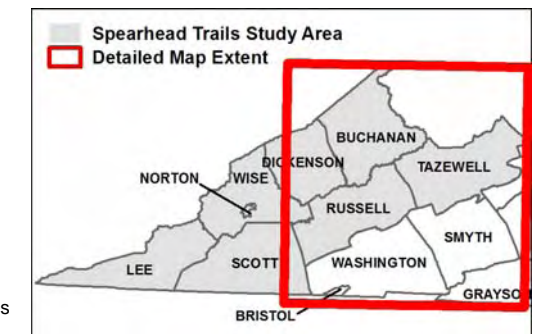
CONNECTIONS & DESTINATIONS:

From Burke's Garden to Guest River Gorge, crosses Route 80 in Russell County.

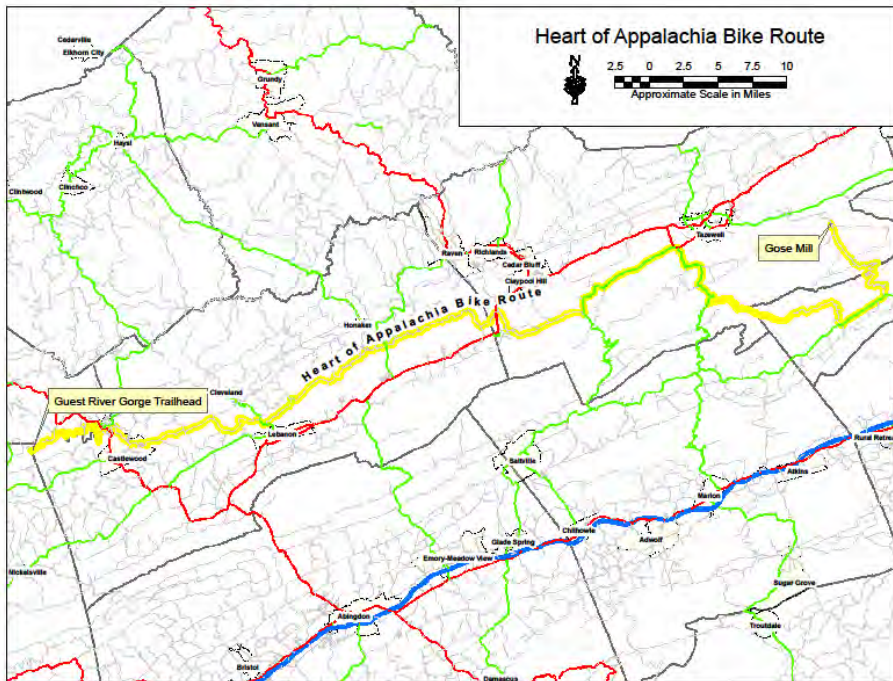
See next page for more on this.

Legend

- Proposed Trail
- Public Roads**
- Route Type**
- US
- VA
- Local
- Unclassified
- Railroad
- National Forest
- Public Fishing Lakes
- City Boundary



THE HEART OF THE APPALACHIA BIKE ROUTE & DRIVING TOUR



The Heart of Appalachia Bike Route is 128 miles of roads and trails in Tazewell, Bland, Russell and Wise counties. The route takes cyclists through some of the most beautiful mountain scenery in southwest Virginia, and it provides a variety of terrain and surfaces, including paved and gravel roads, rail-trails and single-track side trips.

Begin in Burkes Garden, a mountain-ringed bowl 10 miles in diameter that contains some of the most fertile farmland in the state. From there, follow the route along sparsely traveled roads in the Jefferson National Forest, across U.S. Bicycle Route 76 in Russell County, to the end at the Guest River Gorge Trail near Coeburn. Forty miles of side-trails provide access to spectacular natural features such as Russell Creek Falls and The Pinnacle at Big Cedar Falls.

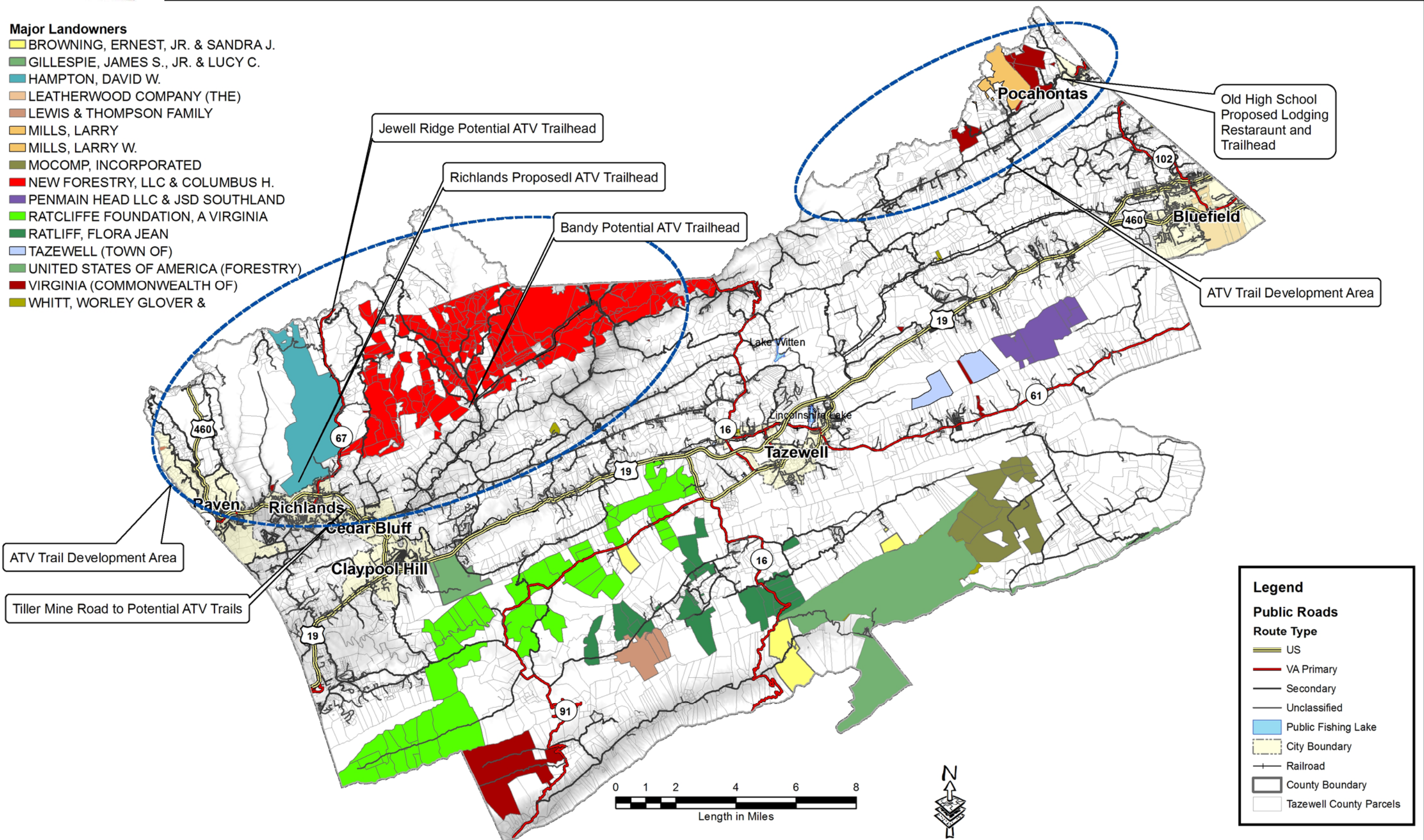
This is Clinch River country. The Heart of Appalachia route offers vistas of mountain valleys and a river crossing on a swinging suspension bridge. Since the ride uses both paved and unpaved secondary roads, experienced riders say that knobby tires on a road bike or hybrid tires on a mountain bike are the way to go. Approach the Heart of Appalachia as a self-supported ride; there are few businesses along the way to provide supplies. Plan ahead, and stock up in the towns of Tazewell, Lebanon and St. Paul.

The Heart of Appalachia Bike Route is the only state bicycle route in Virginia. It was officially recognized by the General Assembly in 1999, when legislators allocated \$50,000 to provide signage for the bike route and scenic drive in an effort to promote tourism and economic development.

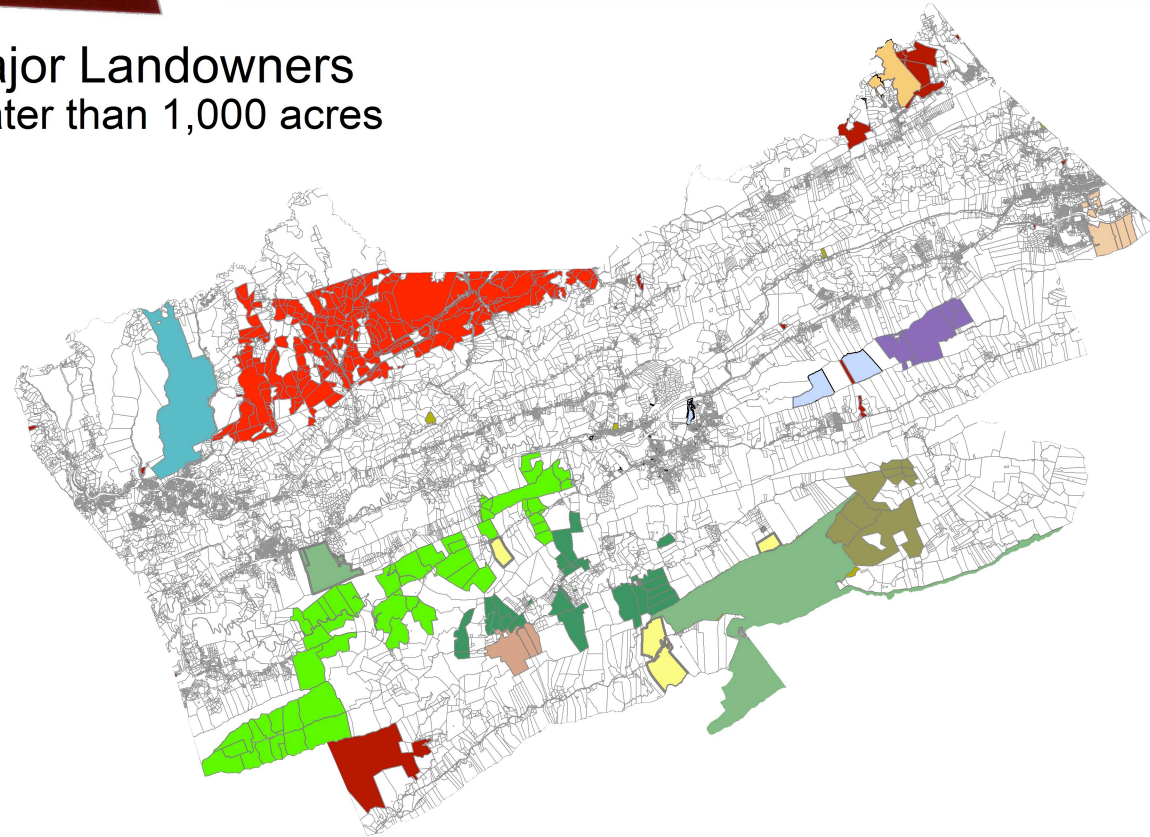
Information obtained from <http://www.virginia.org/site/features.asp?featureid=364>

Major Landowners

- BROWNING, ERNEST, JR. & SANDRA J.
- GILLESPIE, JAMES S., JR. & LUCY C.
- HAMPTON, DAVID W.
- LEATHERWOOD COMPANY (THE)
- LEWIS & THOMPSON FAMILY
- MILLS, LARRY
- MILLS, LARRY W.
- MOCOMP, INCORPORATED
- NEW FORESTRY, LLC & COLUMBUS H.
- PENMAIN HEAD LLC & JSD SOUTHLAND
- RATCLIFFE FOUNDATION, A VIRGINIA
- RATLIFF, FLORA JEAN
- TAZEWELL (TOWN OF)
- UNITED STATES OF AMERICA (FORESTRY)
- VIRGINIA (COMMONWEALTH OF)
- WHITT, WORLEY GLOVER &

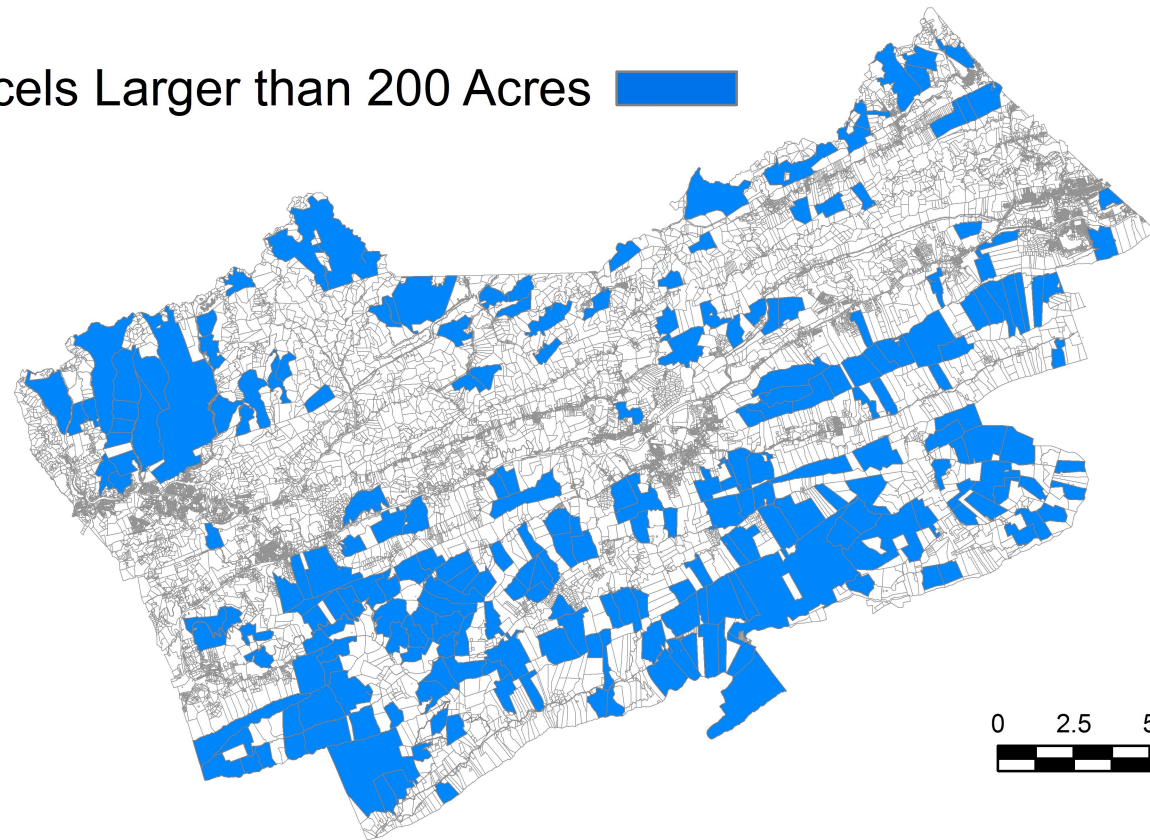


**Major Landowners
Greater than 1,000 acres**



- Major Landowners**
- BROWNING, ERNEST, JR. & SANDRA J.
 - GILLESPIE, JAMES S., JR. & LUCY C.
 - HAMPTON, DAVID W.
 - LEATHERWOOD COMPANY (THE)
 - LEWIS & THOMPSON FAMILY
 - MILLS, LARRY
 - MILLS, LARRY W.
 - MOCOMP, INCORPORATED
 - NEW FORESTRY, LLC & COLUMBUS H.
 - PENMAIN HEAD LLC & JSD SOUTHLAND
 - RATCLIFFE FOUNDATION, A VIRGINIA
 - RATLIFF, FLORA JEAN
 - TAZEWELL (TOWN OF)
 - UNITED STATES OF AMERICA (FORESTRY)
 - VIRGINIA (COMMONWEALTH OF)
 - WHITT, WORLEY GLOVER &

Parcels Larger than 200 Acres ■



Parcels Larger than 500 Acres ■

