

Myer Creek Park is one of the larger county/city parks in Kentucky.

Two recreational trails grants were awarded by the Governor's Office of Local Development. These funds will be used to mark existing trails, create new trails, add directional signage, maps, etc.

The Forestry Grant is being used to develop interpretive displays, a nature facility and an outdoor classroom, educational website and printed materials.

This brochure is an inventory of the plants and trees located in Myer Creek Park, GPS coordinates, photos and information about that type of tree or plant. More information about Myer Creek Park and McLean County can be found at trailsrus.com/mcleancounty.



Funding was provided in part by the Urban Forestry Program of the USDA Forest Service & the Kentucky Division of Forestry.

KENTUCKY

McLean County's

Myer Creek Park

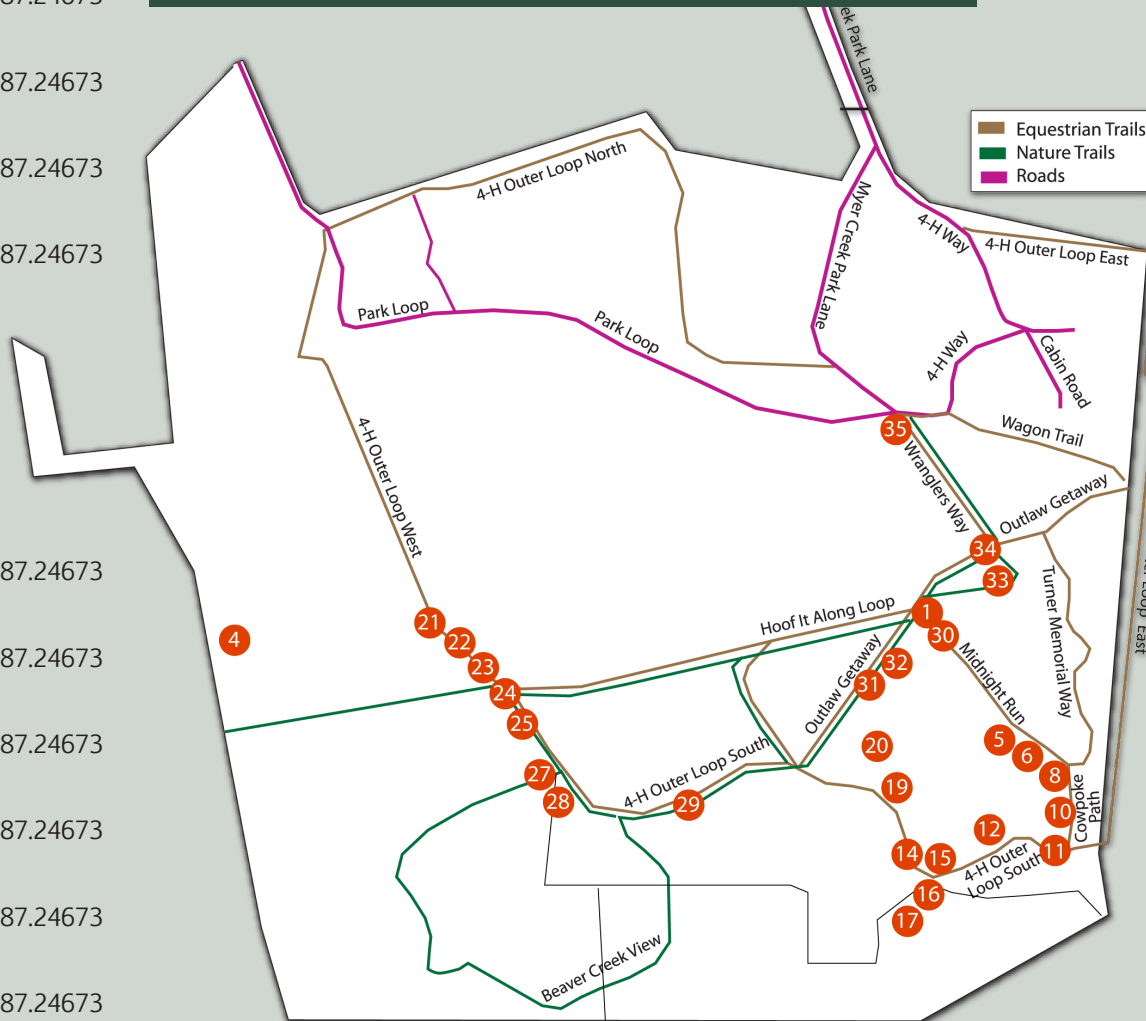


Trees & Plants Inventory

trailsrus.com/mcleancounty

Tree & Plant Location Map

- 1** Shingle Oak
GPS (Lat) 37.54227 (Long) -87.24673
- 2** Sweet Gum
GPS (Lat) 37.54227 (Long) -87.24673
- 3** Poison Ivy
GPS (Lat) 37.54227 (Long) -87.24673
- 4** Cherry Bark Oak
GPS (Lat) 37.54227 (Long) -87.24673
- 5** Post Oak
GPS (Lat) 37.54227 (Long) -87.24673
- 6** Pin Oak
GPS (Lat) 37.54227 (Long) -87.24673
- 7** Mockernut Hickory
GPS (Lat) 37.54227 (Long) -87.24673
- 8** Shagbark Hickory
GPS (Lat) 37.54227 (Long) -87.24673
- 9** Winged Elm
GPS (Lat) 37.54227 (Long) -87.24673
- 10** Red Mulberry
GPS (Lat) 37.54227 (Long) -87.24673
- 11** Catalpa
GPS (Lat) 37.54227 (Long) -87.24673
- 12** Blackberry Bush
GPS (Lat) 37.54227 (Long) -87.24673
- 13** Northern Red Oak
GPS (Lat) 37.54227 (Long) -87.24673
- 14** Grape Vine
GPS (Lat) 37.54227 (Long) -87.24673
- 15** Green Ash
GPS (Lat) 37.54227 (Long) -87.24673
- 16** Stinging Nettle
GPS (Lat) 37.54227 (Long) -87.24673
- 17** River Birch
GPS (Lat) 37.54227 (Long) -87.24673



- 18** White Oak
GPS (Lat) 37.54227 (Long) -87.24673
- 19** Red Bud
GPS (Lat) 37.54227 (Long) -87.24673
- 20** Honey Locust
GPS (Lat) 37.54227 (Long) -87.24673
- 21** Box Elder
GPS (Lat) 37.54227 (Long) -87.24673
- 22** Trumpet Vine
GPS (Lat) 37.54227 (Long) -87.24673

- 23** Sugar Berry
GPS (Lat) 37.54227 (Long) -87.24673
- 24** Silver Maple
GPS (Lat) 37.54227 (Long) -87.24673
- 25** Shingle Oak
GPS (Lat) 37.54227 (Long) -87.24673
- 26** Sericea Lespedeza
GPS (Lat) 37.54227 (Long) -87.24673
- 27** River Birch
GPS (Lat) 37.54227 (Long) -87.24673
- 28** Persimmon
GPS (Lat) 37.54227 (Long) -87.24673
- 29** Winged Sumac
GPS (Lat) 37.54227 (Long) -87.24673
- 30** Sycamore
GPS (Lat) 37.54227 (Long) -87.24673
- 31** Milkweed
GPS (Lat) 37.54227 (Long) -87.24673
- 32** Coral Berry
GPS (Lat) 37.54227 (Long) -87.24673
- 33** Red Maple
GPS (Lat) 37.54227 (Long) -87.24673
- 34** Sassafras
GPS (Lat) 37.54227 (Long) -87.24673
- 35** Walnut
GPS (Lat) 37.54227 (Long) -87.24673

For more information, visit trailsrus.com/mcleancounty