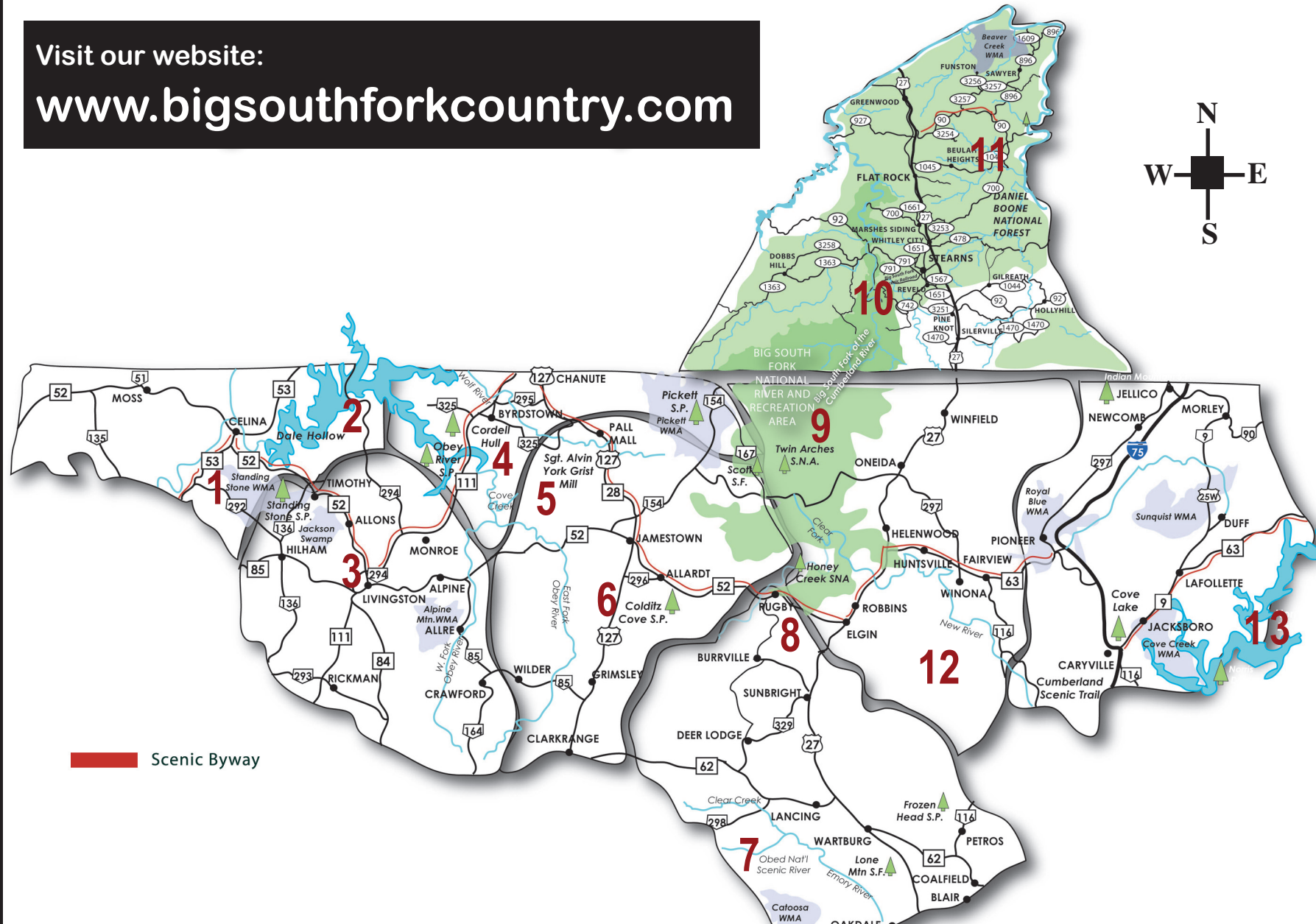


BIG SOUTH FORK COUNTRY

Where Adventure Begins!

Visit our website:
www.bigsouthforkcountry.com



Scenic Byway

1
STANDING STONE STATE PARK
 Hilham, TN
 (931) 823-6347

Lodge, camping, pool, picnic areas, outstanding scenery, wildflowers, fossils & other natural diversity.

www.dalehollow-lake.net/standing_stone_park.html

2
DALE HOLLOW LAKE
 Celina, TN
 (931) 243-2211

Trophy fishing, water recreation, bald eagle viewing. Also home to Free Hill Historic Site, Dale Hollow Fish Hatchery, marinas & resort communities.

www.dalehollow.com

3
LIVINGSTON HISTORIC COURT SQUARE
www.overtonco.com

Shops, restaurants, historic buildings, park w/amphitheater, walking trail, playground. Gov. Robert's Law Office with historic marker

4
CORDELL HULL BIRTHPLACE & MUSEUM
 Byrdstown, TN
 (931) 864-3247

Visitor center, small museum with artifacts, log cabin, short movie, gift shop and cave tours.

www.cordellhullmuseum.com

5
SGT. ALVIN YORK STATE HISTORIC PARK
 Pall Mall, TN
 (931) 879-4026

Home, grist mill, park, general store celebrating the life of this WWI decorated hero.

<http://bigsouthforkpark.com/york.htm>

6
HIGHLAND WINERY
 Jamestown, TN
 (931) 879-9519

Tours, special dinners, music events, wine tasting

www.highlandmanorwinery.com

7
OBED WILD & SCENIC RIVER
 Wartburg, TN
 (423) 346-6294

Canoeing, kayaking, rafting, rock climbing for experienced climbers, fishing and hiking. Nearby Frozen Head S.P. and Lone Mountain S.F.

www.nps.gov/obed/

8
HISTORIC RUGBY
 Rugby, TN
 (865) 628-2441

Restored Victorian village. Serves as a living community and a fascinating historic site w/20 original buildings. Bed and breakfast inns, restaurants.

www.historicrugby.org

9
BIG SOUTH FORK NATIONAL RIVER & RECREATION AREA
 (423) 286-7275 OR
 (606) 376-5073

Breathtaking geological features, camping, whitewater rafting, kayaking, canoeing and much more.

<http://www.nps.gov/biso>

10
BIG SOUTH FORK McCREARY COUNTY AREA ATTRACTIONS
 (606) 376-3008

Big South Fork Scenic Railroad
 Blue Heron Mining Camp
 Barthell Mining Camp

11
DANIEL BOONE NATIONAL FOREST & NEARBY CUMBERLAND FALLS STATE PARK
 (606) 376-5323

Daniel Boone N.F. encompasses nearly all McCreary County. Enjoy hiking, camping, horseback riding, wildlife viewing. Cumberland Falls is known for its "Moon Bow."

www.fs.fed.us/R8/boone

12
BRIMSTONE RECREATION
 Huntsville, TN
 (423) 663-HUNT

Enjoy ATV riding, hunting, fishing, horseback riding, mountain biking, hiking and bird watching.

www.brimstonerecreation.com

13
NORRIS LAKE & RECREATION AREA
 Lake City, TN
 (865) 426-7461

Fishing, swimming, water skiing, boating. Produces excellent catches of rock fish, bass, walleye and crappie.

<http://co.campbell.tn.us/tourism.html>



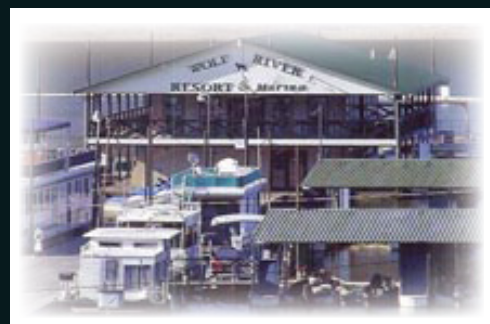
EQUESTRIAN

- Barren Fork Horse Camp** (McCreary)
- Bear Creek Horse Camp** (McCreary)
- Bell Farm Horse Camp** (McCreary)
- Double H Tack Store** (Clay)
- East Fork Stables** (Fentress)
- Horse Stuff Inc.** (Fentress)
- Honey Creek Horse Camp** (Scott)
- Lone Mountain State Forest** (Morgan)
- Monteagle Stable & Lessons** (Scott)
- Saddle Valley Campground** (Fentress)
- Stampede Run Horse Camp** (McCreary)
- Station Horse Camp** (Scott)
- Tally Ho Stables** (Scott)
- True West Campground & Stables** (Fentress)
- Uncle Dale's Trading Post** (Scott)
- Wilderness Resort Cabins & Stable** (Scott)
- Williams Creek Stable** (Scott)
- Zenith Stable & Campgrounds** (Fentress)



GOLF

- Oneida Country Club & Golf** (Scott)
- Dale Hollow S.R.P. Golf Course** (Clay)
- Greens at Deerfield** (Campbell)
- Hidden Valley Golf & Country Club** (Overton)
- LaFollette Country Club** (Campbell)
- Stearns Golf Course** (McCreary)



MARINAS

- Alum Ford Boat Launch Ramp** (McCreary)
- Cove Lake S.P. Marina** (Campbell)
- Dale Hollow Marina** (Clay)
- Eagle Cove Resort & Marina** (Pickett)
- Eastport Marina & Resort** (Fentress)
- Flat Hollow Marina** (Campbell)
- Gunnels Fishing Camp** (Pickett)
- Holly Creek Marina** (Clay)
- Horse Creek Marina** (Clay)
- Indian River Marina** (Campbell)
- Livingston Boat Dock & Marina** (Clay)
- Mountain Lake Marina** (Campbell)
- Noes Boat Dock** (McCreary)
- Norris Dam Marina** (Campbell)
- Rainbow Marina** (Campbell)
- Star Point Marina & Resort** (Pickett)
- Sawyers Boat Launch** (McCreary)
- Seguoyah Marina** (Campbell)
- Springs Dock & Resort** (Campbell)
- Stardust Resort & Marina** (Campbell)
- Sugar Hollow Boat Dock** (Campbell)
- Sunset Marina** (Pickett)
- Turkey Creek** (McCreary)
- Twin Cove Marina** (Campbell)
- Whitman Hollow Dock** (Campbell)
- Willow Grove Marina** (Clay)
- Wolf Creek Marina** (Pickett)



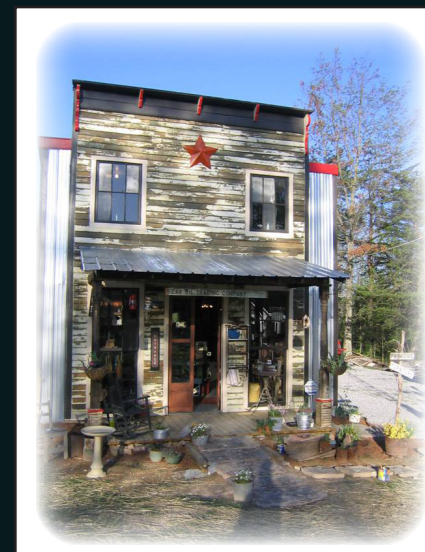
BED & BREAKFAST INNS

- Anchors Away B&B** (Pickett)
- Delia's Guesthouse** (Scott)
- Grey Gables B&B** (Morgan)
- Farm House Inn B&B** (McCreary)
- Newbury House B&B** (Morgan)
- Schoolhouse B&B** (Fentress)
- Southern Porches B&B** (Pickett)
- Wildwood Lodge B&B** (Fentress)



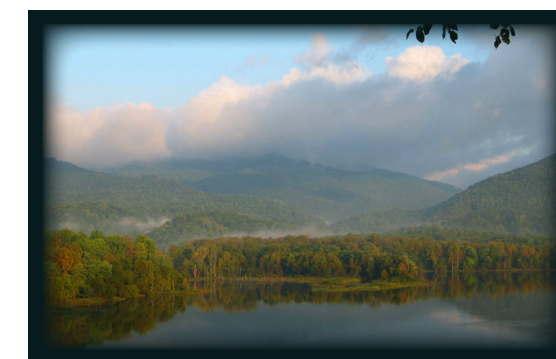
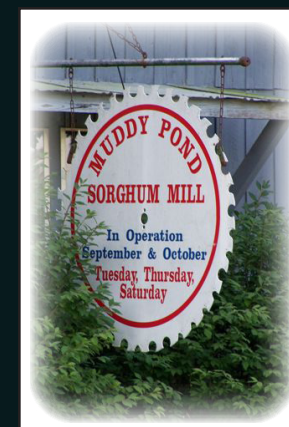
WINERIES

- Highland Winery** (Fentress)
- Millroad Winery** (Clay)
- Holly Ridge Winery** (Overton)



CRAFTERS & ARTISANS

- Alice's Treasures** (Pickett)
- Bear Creek Crafts** (Scott)
- Bear Oil Trading Company** (McCreary)
- Blue Mountain Art & Framing Studio** (Fentress)
- Bluetick Antiques** (Fentress)
- Commissory Museum Store** (Morgan)
- Mountain Craft Center** (McCreary)
- Fruit of the Spirits** (McCreary)
- Gallery on Main** (Overton)
- Junkyard Pottery** (McCreary)
- Muddy Pond Mennonite Community** (Fentress)
- Old Country Cafe' Pen and Ink** (McCreary)
- Spirit of Red Hill Nature Art** (Morgan)
- Sweet Kreations** (McCreary)
- Tower Crafts** (McCreary)



COUNTY CONTACTS:

Byrdstown/Pickett Co. Chamber/Tourism
(888) 406-4704
www.dalehollow.com

Fentress County Chamber/Tourism
Jamestown, TN
(931) 879-9948
www.jamestowntn.org

Campbell County Chamber /Tourism
(423) 566-0329
<http://co.campbell.tn.us/tourism/html>

Clay County Chamber/Tourism
Celina, TN
931-243-3338
www.dalehollowlake.org

McCreary County Chamber/Tourism
Whitley City, KY
606-376-3008
(888) 284-3718

Morgan County Chamber/Tourism
Wartburg, TN
(423) 346-6288
www.morgancountychamber.com

Overton-Livingston Chamber/Tourism
(800) 876-7393
www.overtonco.com

Scott County Chamber/Tourism
Helenwood, TN
(423) 663-6900
www.scottcountychamber.com

