

At the end of the concrete bridge, take a left onto Rt. 460. You will travel 4.3 mi. along the Levisa River before reaching Weller Yard - the train yard for coal leaving Buchanan County.



The trail follows Rt. 460 to Harman Junction then turns right onto Rt. 609 toward the Breaks Interstate Park.

You will pass an abandoned coal loading station and an active mine on this road. The route continues 3.4 mi. before reaching the old Harman Mine site. The Harman Mine sign and company store are the only remnants of the mine. The property now belongs to the Harman Baptist Church.



Continuing 5.7 mi. and passing several operating mines will bring you to the Breaks Village. At the intersection turn left onto Rt. 768. In .3 of mile turn left to the Breaks Interstate Park which is .8 of mile on the right.



Buchanan County Tourism Committee
Grundy, VA 24614



**Welcome to
The Coal Heritage
Trail
Buchanan County
Virginia**

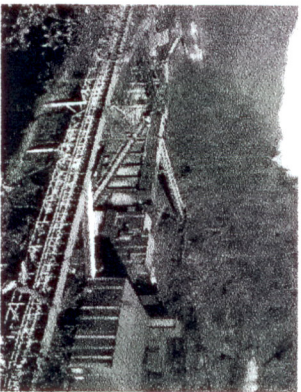
Leaving Richlands, VA in Tazewell County, the trail runs for 8 mi. along Rt. 67 to the top of the mtn. where it bears left toward Whitewood. There it follows Rt. 635 8.6 mi. to the Whitewood area. The trail passes mining operations, railroad trestles and the location of the future Buchanan County Tourist Train. A hike along the railroad tracks here will take you across a small railroad bridge to your left and past abandoned mine areas.

At the intersection of Rt. 635 & Rt. 638 the trail turns left onto Rt. 638 toward the tiny mining community of Whitewood. The trail continues 2.4 miles where it makes a right turn onto Rt.628(Loggys Bottom Rd.). The trail continues 3.6 mi. on Rt. 628 passing reclaimed strip mine sites along the valley below. At the intersection of Rt. 628 & Rt. 639 the trail makes a left onto Rt. 639 along the scenic ridge of Compton Mtn. Rt. 639 passes the Mtn. Top Golf Course driveway which is to the right. This short driveway leads to a golf course located on a reclaimed strip mine site. It is worth the time to stop and see how the people of Buchanan County utilize reclaimed strip mine sites.

At the next intersection, a left on Rt. 83 (Slate Creek) will take you 1.5 mi. to an intersection with Rt. 640 (Hale Creek). Turn left here across a small concrete bridge and continue a few yards to an intersection with Rt. 641 (Patterson). Take a slight right and continue 5.1 mi. along this road. You will pass many reclaimed mine sites. At the intersection with Rt. 638(Dismal) the trail turns right. Just .2 mi. ahead on the left is a huge coal stockpile where coal is stored for future use.

The trail then continues on Rt. 638 (Dismal) 3.1 mi. to Virginia Pocahontas Island Creek Mine #1. This mine is no longer in production and offers views of the above ground layout of a large underground mine.

Within .6 mi the trail enters the Jewell Coal & Coke(Jewell Smokeless) Coal Plant area. The belway over the road carries coal. The loading dock is to the left and the Coke Ovens are below the road.



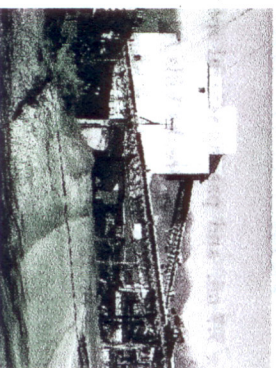
Rt. 638 will then lead to an intersection with Rt. 460. There take a right onto Rt. 460 (four lane highway). This road continues 3.4 mi. following the railroad and passing many of the coke plant offices and coal cars loaded with coke. At the traffic light at Vansant, VA you will see VA Pocahontas Mine #3 to your left. There are areas to pull-off along this stretch of highway.

The trail then continues on Rt. 460 toward the town of Grundy. Within .3 of a mile you will pass the Grundy Mural on the outer wall of a local supermarket. This mural depicts the history of Buchanan County and the town of Grundy.

Another 1.2 mi. on Rt 460 and the Grundy Plaza is on the left. The Plaza was once the site of the Edith Fay Coal Dock. Slate can still be seen behind the Plaza. This part of the trail is now officially the town of Grundy. Continue 2.2 mi. on Rt. 460 for a view of the cut-a-way engineered by the Army Corps of Engineers. This was the result of the need to move the town from a flood plain. The area to your left was mined before being landscaped for the town.

In front of the courthouse is a bronze statue honoring local miners. This statue was donated by local Girl Scout Troops.

At the intersection past the coal miner statue, the trail turns right onto Rt. 83 (Slate Creek). Follow Rt 83 4.2 mi. to an intersection with Rt. 642(Elkins Branch). This road takes you over a mountain that has been mined and reclaimed. After 4.6 mi. you will reach an intersection. Take a left toward the small town of Roseanne on Rt. 651. The trail runs only .7 of a mile to another intersection where it takes a left onto Rt. 650 toward Homecreek. Follow Rt. 650 until it runs into Rt. 700. The road will go through the United Coal Co. tipple.



The trail then crosses the railroad tracks and a concrete bridge onto Rt. 460 at Big Rock, VA.