

National Coal Heritage Area, West Virginia

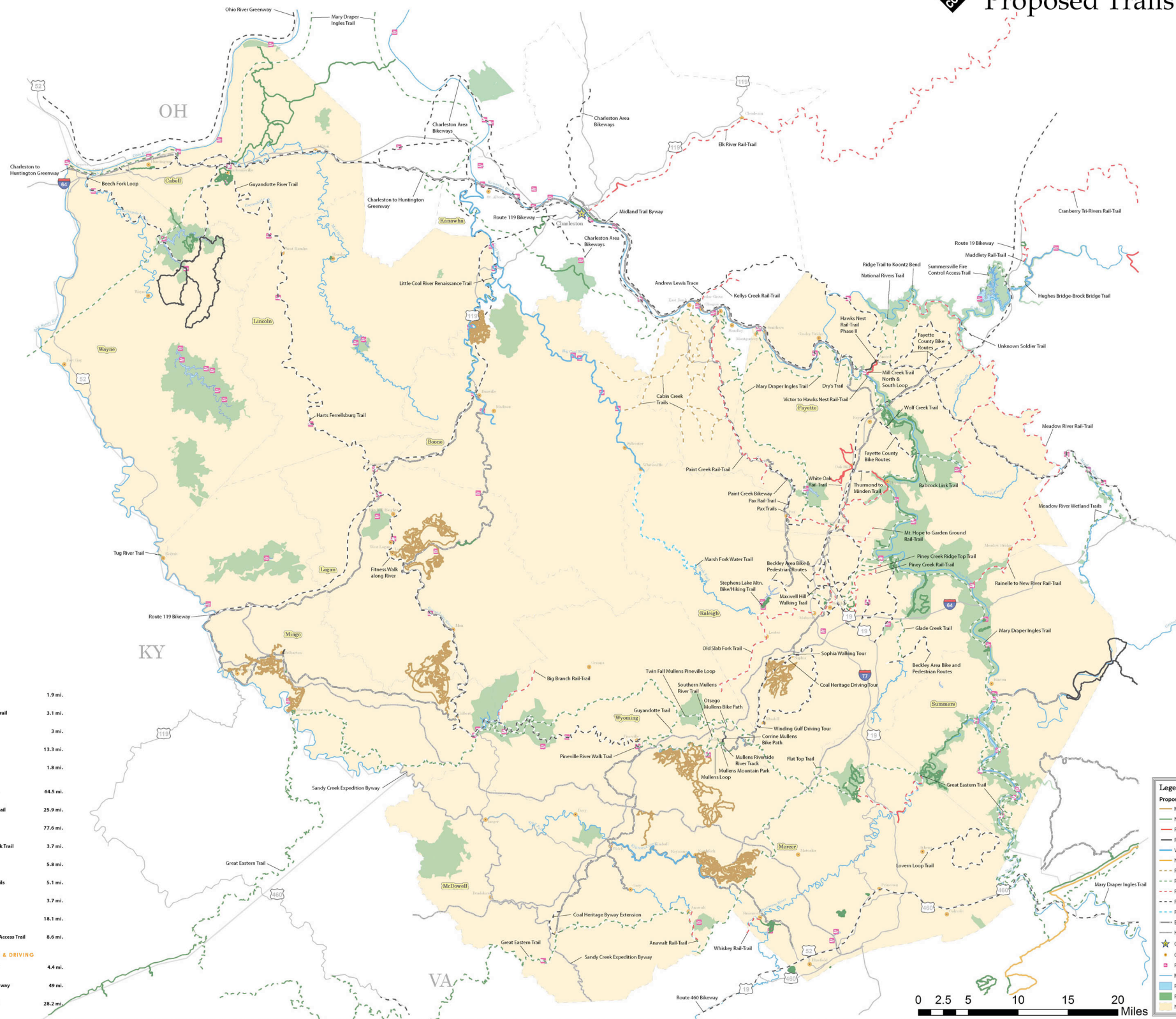


Trail Plan for Greenways and Blueways

Proposed Trails

PROPOSED TRAILS
The name, trail type, and length in miles for each proposed trail on the map is listed below.

Trail Name	Type	Length (mi)
WITHIN THE NCHA		
Anawak Rail-Trail	Rail-Trail	3.4 mi.
Andrew Lewis Trace	Roadside Trail	29.5 mi.
Babcock Link Trail	Non-Motorized Trail	8.1 mi.
Beechfork Area Bike and Pedestrian Routes	Roadside Trail	107.7 mi.
Beech Fork Loop	Roadside Trail	30.9 mi.
Big Branch Rail-Trail	Rail-Trail	6.8 mi.
Bluestone to Camp Creek Rail-Trail	Rail-Trail	12.2 mi.
Cabin Creek Trails	Motorized Trail	63.8 mi.
Charleston to Huntington Greenway	Non-Motorized Trail	69 mi.
Coal Heritage Byway Extension	Roadside Trail	4 mi.
Corrine Mullens Bike Path	Non-Motorized Trail	1.9 mi.
Dry's Trail	Non-Motorized Trail	3.8 mi.
Fayette County Bike Routes	Roadside Trail	25.2 mi.
Fitness Walk along the River	Non-Motorized Trail	1.4 mi.
Flat Top Trail	Non-Motorized Trail	4 mi.
Glade Creek Trail	Non-Motorized Trail	10.3 mi.
Great Eastern Trail	Non-Motorized Trail	425 mi.
Guyandotte Trail	Non-Motorized Trail	14.2 mi.
Guyandotte River Trail	Roadside Trail	142.2 mi.
Harts Ferrellsburg Trail	Non-Motorized Trail	1.6 mi.
Hawks Nest Rail-Trail Phase II	Rail-Trail	0.9 mi.
Little Coal River Renaissance Trail	Non-Motorized Trail	19.6 mi.
Lovers Loop Trail	Roadside Trail	19.7 mi.
Marsh Fork Water Trail	Water Trail	20.5 mi.
Mary Draper Ingles Trail	Rail-Trail	357 mi.
Maxwell Hill Walking Trail	Roadside Trail	2.9 mi.
Meadow River Rail-Trail	Rail-Trail	39.5 mi.
Midland Trail Byway	Roadside Trail	87 mi.
Mill Creek Trail North and South Loop	Non-Motorized Trail	0.8 mi.
Mt. Hope to Garden Ground Rail-Trail	Rail-Trail	4.8 mi.
Mullens Loop	Roadside Trail	3 mi.
Mullens Mountain Park	Non-Motorized Trail	1 mi.
Mullens Riverside Walking Track	Non-Motorized Trail	0.4 mi.
National Rivers Trail	Non-Motorized Trail	4.6 mi.
Old Slab Fork Trail	Rail-Trail	78.7 mi.
Osteo Mullens Bike Path	Non-Motorized Trail	2.5 mi.
Paint Creek Rail-Trail	Rail-Trail	43.5 mi.
Paint Creek Bikeway	Roadside Trail	20.1 mi.
Pax Rail-Trail	Rail-Trail	3.5 mi.
Pax Trails	Non-Motorized Trail	3.5 mi.
Pineville River Walk Trail	Roadside Trail	2 mi.
Piney Creek Rail-Trail	Rail-Trail	11.5 mi.
Piney Creek Ridgeway Trail	Non-Motorized Trail	14.4 mi.
Rainelle to New River Rail-Trail	Rail-Trail	18.1 mi.
Ridge Trail to Koonz Bend	Non-Motorized Trail	8 mi.
Route 119 Bikeway	Roadside Trail	64.2 mi.
Route 19 Bikeway	Roadside Trail	56.3 mi.
Route 460 Bikeway	Roadside Trail	59.3 mi.
Sophia Walking Tour	Trail	1.1 mi.
Southern Mullens River Trail	Non-Motorized Trail	0.4 mi.
Stevens Lake MT Bike/Hiking Trail	Non-Motorized Trail	1.6 mi.
Thurmond to Minden Trail	Roadside Trail	2.1 mi.
Tug River Trail	Motorized Trail	0.8 mi.
Twin Falls Mullens Pineville Trail	Non-Motorized Trail	11.3 mi.
Unknown Soldier Trail	Roadside Trail	1.9 mi.
Victor to Hawks Nest Rail-Trail	Rail-Trail	3.1 mi.
Whiskey Rail-Trail	Rail-Trail	3 mi.
White Oak Rail-Trail	Rail-Trail	13.3 mi.
Wolf Creek Trail	Non-Motorized Trail	1.8 mi.
NEAR THE NCHA		
Charleston Area Bikeways		64.5 mi.
Cranberry Tr-Rivers Rail-Trail		25.9 mi.
Elk River Rail-Trail		77.6 mi.
Hughes Bridge-Brook Brook Trail		3.7 mi.
Kelly's Creek Rail-Trail		5.8 mi.
Meadow River Wetland Trails		5.1 mi.
Muddydy Rail-Trail		3.7 mi.
Ohio River Greenway		18.1 mi.
Southern Mullens River Trail		8.6 mi.
BYWAYS, BACKWAYS, & DRIVING TOURS		
Coal Heritage Driving Tour		4.4 mi.
Sandy Creek Expedition Byway		49 mi.
Winding Gull Driving Tour		28.2 mi.



HOW TO USE THE MAP
This map is a free-standing companion to the "NCHA Trail Plan for Greenways and Blueways" document. It is part of an ongoing initiative to collect detailed trail data throughout the National Coal Heritage Area (NCHA) of southern West Virginia. The map is to be used for visioning and planning of community-based trails of all kinds. For more information on this initiative, or to provide additional input, please visit <http://www.coalheritage.org>

The NCHA encompasses 13 counties in southern West Virginia: Boone, Cabell, Fayette, Logan, Lincoln, McDowell, Mercer, Mingo, Raleigh, Summers, Wayne, Wyoming and the Pann Creek and Cabin Creek Watersheds located in southern Kanawha County.

Why a Trails Plan for the NCHA? Trails are one way we can experience our natural and cultural heritage. Trails provide an outdoor venue for people to recreate and exercise with family and friends, resulting in improved health and wellness. Trails can also connect people and places, providing a safe alternative mode of transportation. Trails make the community a more desirable place to live, help to attract and retain businesses, and improve the quality of life.

Trails offer a host of tourism opportunities - nature-based tourism, sustainable tourism, adventure tourism, ecotourism, and heritage tourism. The National Trust for Historic Preservation lists the following as benefits of heritage and cultural tourism for the local communities involved:

- It builds closer, stronger communities;
- It protects historic, cultural and natural resources in communities, towns and cities;
- It educates residents and visitors about local/regional history and traditions; and
- It promotes economic and civic vitality of a community or region.

This map illustrates existing and proposed trails that are within, or link to, the National Coal Heritage Area of southern West Virginia. To plan trips using existing trails, please contact the trail manager for the latest information on trail status, condition and maps. This map is solely intended for informational purposes. It is not to be used for navigational purposes.

THE MAP:

- Provides a snapshot of existing and proposed trails
- Details the trail's type of use.
- Provides a visual illustration of possible linkages between trails, communities, public lands and adjacent states.
- Provides trail planners with a powerful tool for fundraising and project development.
- Provides contacts for people interested in volunteering and assisting with projects.

EXISTING TRAILS are corridors that have been acquired for public use. Some sections may be officially open to the public, while other sections may be under construction.

PROPOSED TRAILS are projects in various stages of planning, from visionary to under construction. They have varying degrees of support. During early phases of visioning and concept planning, the current landowner may not yet have been approached about the potential use of his or her land. It is often a long process to establish a trail and get community and financial support to sustain it. The vision is the starting point.

MAPPING PROCESS
The trail mapping effort started with the use of the 2002 WV Trail Plan as a base map, in which 12 public input and mapping workshops were held in 1998. For this NCHA map, a series of six additional public input/GIS mapping workshops were held throughout southern West Virginia between 2006-2008, sponsored by the National Coal Heritage Area Authority. Federal, state, and local organizations also provided digital data. Numerous trail planners, users and managers reviewed the digitized trails to ensure map-grade accuracy. However, trail status is constantly changing as sections of trail are acquired and built, and other projects are initiated, so information shown may not be completely up-to-date.

National Coal Heritage Area - Resources and Contact Information

State and Federal Trail-Related Agencies

National Coal Heritage Area
Christy Bailey, Executive Director
Beckley, WV
304-256-6941
info@coalheritage.org
www.coalheritage.org

National Park Service - Rivers, Trails & Conservation Assistance Program (RTCA)
Peggy Pings, Outdoor Recreation Planner
Morgantown WV
304-293-7528
Peggy_Pings@nps.gov
www.nps.gov/rta

Jamie Fields, Outdoor Recreation Planner
Glen Jean WV
304-465-6527
Jamie.Fields@nps.gov
www.nps.gov/rta

National Park Service
New River Gorge National River, www.nps.gov/neri
Gauley River National Recreation Area, www.nps.gov/gari
Bluestone National Scenic River, www.nps.gov/blue
Don Striker, Superintendent
Glen Jean WV
304-465-0508
Don_Striker@nps.gov

US Army Corps of Engineers
Huntington District
304-539-5211 or 866-502-2570
Public Affairs@h101.usace.army.mil
www.h101.usace.army.mil

WV Division of Natural Resources
State Parks & Forests, Wildlife Management Areas, Streams
1-800-CALL-WVA
www.wvdnr.gov

WV Division of Tourism
1-800-CALL-WVA
www.wvtourism.com

WV State Trail Program
Bill Robinson, State Trail Coordinator
304-558-9615
Bill.C.Robinson@wv.gov
http://www.wvdot.com/ROADWAYS/rp3d5_trails.htm

Statewide Trail-Related Organizations

ATV
Burning Rock Off-Road Park
877-683-9240
atvtherock@gmail.com
www.burningrockwv.com

Hatfield-McCoy Regional Recreation Authority
800-592-2127
info@trailsheaven.com
www.trailsheaven.com

Bicycling
WV Cycling Foundation
dave@pnyworks.com
www.wvvcf.org

WV Mountain Bike Association
304-612-0301
jrpetsko@hotmail.com
www.wvmba.com

Equestrian
WV Horse Council
wvhorsecouncil@yahoo.com
<http://my.site.verizon.net/resnw34d/westvirginiahorsecouncil>

Hiking
WV Scenic Trails Association
wvscenictrailsassn@yahoo.com
www.wvscenictrails.org

Land Protection
WV Land Trust
304-346-7788
wvlandtrst@te-associates.com
www.wvlandtrust.org

Paddling
WV Wildwater Association
info@wvwa.net
www.wvwa.net

Rail-Trails
WV Rails-to-Trails Council
304-592-0177
bikenlike@gillhouse.com

CREDITS:
Much appreciation goes to the Steering and Advisory Committees, made up of trail user representatives and regional reps, who provided input to the planning process, assistance with the workshop, participation in the process, and editing to the final copy. Additionally, local trail managers, users, and state and federal organizations provided input to the process. Special thanks to the National Park Service's Rivers, Trails and Conservation Assistance Program (NPS-RTCA) for facilitation and coordination. The National Coal Heritage Area Authority, NPS-RTCA, VISTA volunteer GIS technician Dan Castellucci, and Cornerstone GIS collaborated to produce the Trail Maps.

The National Coal Heritage Area Authority, National Park Service's Rivers and Trails Program, and Cornerstone GIS collaborated to produce the Trail Maps as well as the digital and hard copy layouts.

