

National Coal Heritage Area, West Virginia

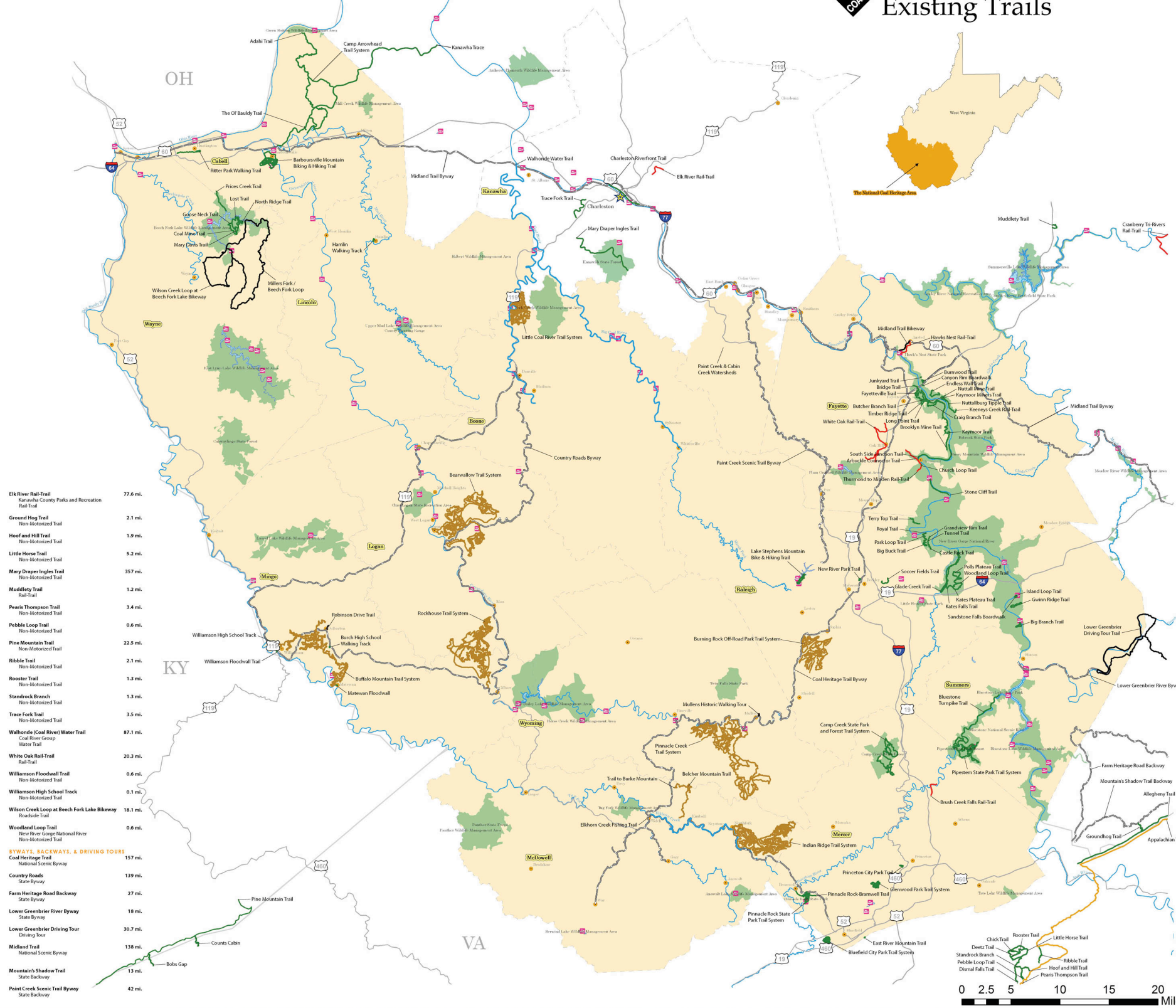
Trail Plan for Greenways and Blueways



Existing Trails

EXISTING TRAILS
The trail name, management entity, type of use, and mileage are listed below for each existing trail on the map.

Trail Name	Management Entity	Type of Use	Mileage
ADRIAN TRAIL	State Area Boy Scout Council	Non-Motorized Trail	20 mi.
ARBuckle Connector Trail	New River Gorge National River	Non-Motorized Trail	0.2 mi.
BARBOURVILLE Mtn. Biking & Hiking Trails	Non-Motorized Trail	21 mi.	
BEARWALLOW TRAIL SYSTEM	Hartfield-McCoy Regional Recreation Authority	Motorized Trail	107.7 mi.
BELCHER MOUNTAIN TRAIL	Motorized Trail	4.6 mi.	
BIG BRANCH TRAIL	New River Gorge National River	Non-Motorized Trail	1.9 mi.
BIG BUCK TRAIL	New River Gorge National River	Non-Motorized Trail	0.8 mi.
BLUEFIELD CITY PARK TRAIL SYSTEM	City of Bluefield Parks and Recreation Dept.	Non-Motorized Trail	8 mi.
BLUESTONE TURNPIKE TRAIL	Bluestone National Scenic River	Non-Motorized Trail	7.2 mi.
BRIDGE TRAIL	Non-Motorized Trail	0.7 mi.	
BROOKLYN MINE TRAIL	Non-Motorized Trail	2.7 mi.	
BRUSH CREEK FALLS RAIL-TRAIL	The Nature Conservancy of WV	Rail-Trail	1.9 mi.
BUFFALO MOUNTAIN TRAIL SYSTEM	Hartfield-McCoy Regional Recreation Authority	Motorized Trail	87 mi.
BURCH HIGH SCHOOL WALKING TRACK	Non-Motorized Trail	0.2 mi.	
BURNING ROCK OFF-ROAD PARK TRAIL SYSTEM	Burning Rock Off-Road Park	Non-Motorized Trail	100 mi.
BURNWOOD TRAIL	Non-Motorized Trail	0.8 mi.	
BUTCHER BRANCH TRAIL	New River Gorge National River	Non-Motorized Trail	0.7 mi.
CAMP ARROWHEAD TRAIL SYSTEM	Tri State Area Boy Scout Council	Non-Motorized Trail	22.4 mi.
CAMP CREEK STATE PARK AND FOREST TRAIL SYSTEM	Camp Creek State Park and Forest	Non-Motorized Trail	40 mi.
CANYON RIM BOARDWALK	New River Gorge National River	Non-Motorized Trail	0.1 mi.
CASTLE ROCK TRAIL	New River Gorge National River	Non-Motorized Trail	0.5 mi.
CHURCH LOOP TRAIL	City of Princeton Parks and Recreation Dept.	Non-Motorized Trail	0.2 mi.
COAL MINE TRAIL	Non-Motorized Trail	0.8 mi.	
CRIG BRANCH TRAIL	New River Gorge National River	Non-Motorized Trail	2.3 mi.
EAST RIVER MOUNTAIN TRAIL	City of Bluefield Parks and Recreation Dept.	Non-Motorized Trail	0.2 mi.
ELKHORN CREEK FISHING TRAIL	Water Trail	17.6 mi.	
ENDLESS WALL TRAIL	New River Gorge National River	Non-Motorized Trail	2.2 mi.
FAYETTEVILLE TRAIL	New River Gorge National River	Non-Motorized Trail	3.9 mi.
GLENDON PARK TRAIL SYSTEM	Glendon Park	Non-Motorized Trail	9.4 mi.
GOOSE NECK TRAIL	Beech Fork Trail System	Non-Motorized Trail	2.0 mi.
GRANDVIEW RIM TRAIL	New River Gorge National River	Non-Motorized Trail	1.5 mi.
GWINE RIDGE TRAIL	New River Gorge National River	Non-Motorized Trail	3.0 mi.
HAMLEN WALKING TRACK	Lions Club	Non-Motorized Trail	0.7 mi.
HAWKS NEST RAIL-TRAIL	Team of Amateurs	Rail-Trail	2.1 mi.
INDIAN RIDGE TRAIL SYSTEM	Hartfield-McCoy Regional Recreation Authority	Motorized Trail	120.8 mi.
ISLAND LOOP TRAIL	New River Gorge National River	Non-Motorized Trail	0.6 mi.
JUNKYARD TRAIL	New River Gorge National River	Non-Motorized Trail	0.2 mi.
KANAWHA TRACE	Non-Motorized Trail	25.4 mi.	
KATES FALLS TRAIL	New River Gorge National River	Non-Motorized Trail	0.1 mi.
KATES PLATEAU TRAIL	New River Gorge National River	Non-Motorized Trail	4.9 mi.
KAYMOOR MINERS TRAIL	New River Gorge National River	Non-Motorized Trail	0.6 mi.
KAYMOOR TRAIL	New River Gorge National River	Non-Motorized Trail	8.3 mi.
KENEYS CREEK RR TRAIL	New River Gorge National River	Non-Motorized Trail	3.3 mi.
LAKE STEPHENS MOUNTAIN BIKE & HIKING TRAIL	Raleigh County Recreation Department	Non-Motorized Trail	4.6 mi.
LITTLE COAL RIVER TRAIL SYSTEM	Hartfield-McCoy Regional Recreation Authority	Motorized Trail	19.6 mi.
LONG POINT TRAIL	New River Gorge National River	Non-Motorized Trail	1.6 mi.
LOST TRAIL	Beech Fork Trail System	Non-Motorized Trail	2.8 mi.
MARY DAVIS TRAIL	Beech Fork Trail System	Non-Motorized Trail	4.5 mi.
MATEWAN FLOODWALL TRAIL	Hartfield-McCoy Regional Recreation Authority	Motorized Trail	0.4 mi.
MIDLAND TRAIL BIKEWAY	Roadside Trail	1.7 mi.	
MILLERS FORK/BEECH FORK LOOP	Roadside Trail	23.4 mi.	
MIDDLETOWN TRAIL	Non-Motorized Trail	3.7 mi.	
MULLENS HISTORIC WALKING TOUR	Roadside Trail	0.5 mi.	
NEW RIVER PARK TRAIL	Non-Motorized Trail	0.6 mi.	
NORTH RIDGE TRAIL	Beech Fork Trail System	Non-Motorized Trail	0.6 mi.
NUTTALL MINE TRAIL	New River Gorge National River	Non-Motorized Trail	0.4 mi.
NUTTALLBURG TRIPLE TRAIL	New River Gorge National River	Non-Motorized Trail	0.4 mi.
PARK LOOP TRAIL	New River Gorge National River	Non-Motorized Trail	1 mi.
PINNACLE CREEK TRAIL SYSTEM	Hartfield-McCoy Regional Recreation Authority	Motorized Trail	145.4 mi.
PINNACLE ROCK STATE PARK TRAIL SYSTEM	Pinnacle Rock State Park	Non-Motorized Trail	6.5 mi.
PINNACLE ROCK-BRAMWELL TRAIL	Non-Motorized Trail	2.4 mi.	
PIPESTEM STATE PARK TRAIL SYSTEM	Pipestem State Park	Non-Motorized Trail	19.5 mi.
POLLS PLATEAU TRAIL	New River Gorge National River	Non-Motorized Trail	4.5 mi.
PRICE CREEK TRAIL	Non-Motorized Trail	2.6 mi.	
PRINCETON CITY PARK TRAILS	City of Princeton Parks and Recreation Dept.	Non-Motorized Trail	1 mi.
RITTER PARK WALKING TRAIL	Non-Motorized Trail	3.1 mi.	
ROBINSON DRIVE TRAIL	Roadside Trail	0.5 mi.	
ROCKHOUSE TRAIL SYSTEM	Hartfield-McCoy Regional Recreation Authority	Motorized Trail	148 mi.
ROYAL TRAIL	New River Gorge National River	Non-Motorized Trail	2.6 mi.
SANDSTONE FALLS BOARDWALK	New River Gorge National River	Non-Motorized Trail	0.2 mi.
SOCCER FIELDS TRAIL	Non-Motorized Trail	1.5 mi.	
SOUTH SIDE JUNCTION TRAIL	New River Gorge National River	Non-Motorized Trail	5.2 mi.
STONE CLIFF TRAIL	New River Gorge National River	Non-Motorized Trail	2.8 mi.
ROOSTER TRAIL	Non-Motorized Trail	1.3 mi.	
STANDROCK BRANCH	Non-Motorized Trail	1.3 mi.	
TRACE FORK TRAIL	Non-Motorized Trail	3.5 mi.	
WALDONSIDE COAL RIVER WATER TRAIL	Coal River Gorge Water Trail	87.1 mi.	
WHITE OAK RAIL-TRAIL	Rail-Trail	20.3 mi.	
WILLIAMSON FLOODWALL TRAIL	Non-Motorized Trail	0.6 mi.	
WILLIAMSON HIGH SCHOOL TRACK	Non-Motorized Trail	0.1 mi.	
WILSON CREEK LOOP AT BEECH FORK LAKE BIKEWAY	Roadside Trail	18.1 mi.	
WOODLAND LOOP TRAIL	New River Gorge National River	Non-Motorized Trail	0.6 mi.
BYWAYS, BACKWAYS, & DRIVING TOURS	National Scenic Byway	157 mi.	
COUNTRY ROADS	State Byway	139 mi.	
FARM HERITAGE ROAD BACKWAY	State Byway	27 mi.	
LOWER GREENBRIER RIVER BYWAY	State Byway	18 mi.	
LOWER GREENBRIER DRIVING TOUR	Driving Tour	30.7 mi.	
MIDLAND TRAIL	National Scenic Byway	138 mi.	
MOUNTAIN'S SHADOW TRAIL	State Backway	13 mi.	
PAINT CREEK SCENIC TRAIL BYWAY	State Backway	42 mi.	



TROUT FISHING

- BOONE COUNTY**
Hopkins Fork
Pond Fork
Spruce Laurel Fork
- FAYETTE COUNTY**
Glade Creek (Babcock)
Laird Creek
Mill Creek
Paint Creek (C&R)
Paint Creek (C&R)
- KANAWHA COUNTY**
Paint Creek
- MCDOWELL COUNTY**
Clear Fork
Dry Fork
Famblor Creek
- MERCER COUNTY**
Camp Creek
East River of New River
Maah Fork
- MINGO COUNTY**
R. D. Bailey Lake (Tailwaters)
- RALEIGH COUNTY**
Glade Creek of New River
Marsh Fork
Guayandote River
Kanawha River
Laird Creek of New River
Meadow Fork
- WAYNE COUNTY**
Beech Fork Lake (Tailwaters)
East Lynn Lake (Tailwaters)
Twelvopole Creek (Wayne Dam)
West Fork of Twelvopole Creek
- WYOMING COUNTY**
Clear Fork (C&R)
Clear Fork (C&R)
Pinnacle Creek
R. D. Bailey Lake (Tailwaters)

FLOAT FISHING TRIPS

- These trips in the National Coal Heritage Area are recommended by the WVDNR. http://www.wvdnr.gov/Fishing/public_access.asp
- BIG COAL RIVER**
(Whitesville to Orgas) (Boone)
Orgas to Fosterville (Boone)
Fosterville to Racine (Boone)
Racine to Peytona (Boone)
 - GREENBRIER RIVER**
(Check water levels prior to floating, can rise and fall quickly.)
Lowell to Talcott (Summers)
Burger Springs to Willowwood (Summers)
 - GUAYANDOTE RIVER**
Milton to Pineville (Wyoming)
Pineville to Baileyville (Wyoming)
Baileyville to RD Bailey Lake campground (Wyoming)
Justice (Mingo) to Wyo (Logan)
Wyo to Earling (Logan)
Earling to Three Mile Bend (Logan)
Three Mile Bend to Peach Creek (Logan)
Peach Creek to Rocky Branch (Logan)
Rocky Branch to Chapmanville (Logan)
Chapmanville to Harts Creek (Logan)
Harts Creek to Branchland (Lincoln)
Branchland to Salt Rock (Lincoln)
Salt Rock to Barboursville (Cabell)
Barboursville to Guayandote (Cabell)
 - KANAWHA RIVER**
Kanawha Falls to Montgomery (Fayette)
 - LITTLE COAL RIVER**
Madison to Danville (Boone)
Danville to Lory Road (Boone)
 - MUD RIVER**
Milton to US60 Bridge (Cabell)
US60 Bridge to Howells Mill (Cabell)
Ons to Guayandote River (Cabell)
 - NEW RIVER**
(Due to dangerous rapids, only experienced boaters should boat the New River with appropriate water craft.)
Shandin Ferry to Cedar Branch (Summers)
Cedar Branch to Indian Creek (Summers)
Bellpoint Park to Brooks Falls (Summers)
Laird Creek to Meadow Creek (Summers)
Meadow Creek (Summers) to Glade Creek (Raleigh)
Glade Creek to Grandview Sandbar (Raleigh)
McCreey (Raleigh) to Stonecliff (Fayette)
Stonecliff to Conrad (Fayette)

WATER BODIES

The water bodies listed below are those rivers or lakes with designated water access points, also known as put-ins (take-outs or boat launches). Rivers can be dangerous due to whitewater and currents, and all boaters should consult a river manager or guidebook before attempting a trip. The West Virginia Division of Natural Resources owns and manages the state's rivers. The National Park Service manages nationally-designated rivers. The U.S. Army Corps of Engineers owns and manages those sections of rivers that are backed up behind their dams, and adjacent lands in the designated floodplain.

Many rivers and lakes are accessed for fishing purposes, as well as paddling. Detailed information is found at <http://www.wvdnr.gov/Fishing/Fishing.htm>. A list of the lakes, public access sites, trout fishing areas, and float fishing trips are found at http://www.wvdnr.gov/fishing/public_access.asp

RIVERS:
Big Coal River
Big Sandy River
Bluestone River
Coal River
Elkhorn Creek
Gauley River
Glade Creek
Greenbrier River
Guayandote River
Kanawha River
Laird Creek of New River
Meadow Fork
Mad River
New River
Ohio River
Tog Fork
Twelvopole Creek

LAKES:
Anasawt Lake
Barboursville Lake
Beech Fork Lake
Bervind Lake
Bobby Lake
Chief Logan Lake
East Lynn Lake
Fitzpatrick Lake
Hawks Nest Lake
Horse Creek Lake
James P. Bailey Lake
Jimmy Lewis Lake
Kee Reservoir
Laird Lake
Lick Creek Lake
Little Beaver Lake
Logan County Airport Pond
Millers Fork Pond
Mountain Valley Lake
Pipstem Lake
Plum Orchard Lake
RD Bailey Lake
Raleigh County Airport Pond
Rockhouse Lake
Stephens Lake
Underwood Lake
Upper Mud Lake

TRAIL TYPES

The map is color coded by trail type.

MOTORIZED TRAILS accommodate ATV's, trail bikes or four-wheel drive vehicles. Some motorized trails also allow non-motorized trail use.

NON-MOTORIZED TRAILS are typically single-track through mountainous terrain, allowing one or more of the following: walking, running, hiking, mountain biking or horseback riding. It could also be a community path or jogging track.

RAIL-TRAILS are non-motorized multi-use trails on abandoned rail corridors converted for public trail use. They are typically level and smooth, suitable for all ages and abilities. Typical uses include walking, running, biking and roller-blading (if paved). Some allow equestrian use.

ROADSIDE TRAILS use a road right-of-way corridor. This could be a parallel off-road path, a sidewalk, a paved road shoulder or bike lanes on the road. Users include bicyclists, walkers, and in some cases ATVs.

WATER TRAILS are routes on a stream, river or lake that provide paddlers or motorboaters with a recreational, scenic, historical or educational opportunity. These are designated put-ins and take-outs, and self-guided informational maps. Many water trails offer land-side camping or docking facilities with visitor services nearby. The WV Recreational Trails Advisory Board has developed criteria for designation and funding.

NATIONALLY DESIGNATED TRAILS are trails that have been applied for and received national designation, such as National Scenic Trail, National Historic Trail, and National Recreation Trail.

BYWAYS are paved roads that have interesting characteristics that fit into "a distinctive collection of American roads, their stories and treasured places," based on their archeological, cultural, historic, natural, recreational, and scenic qualities.

BACKWAYS are unpaved back roads that have interesting characteristics based on their archeological, cultural, historic, natural, recreational, and scenic qualities.

OTHER DEFINITIONS

BLUEWAYS are also known as "Water Trails".

GREENWAYS are linking corridors of green space, sometimes used for ecological conservation, and sometimes allowing public access via trails. For this Plan, a greenway includes a public trail.

INCORPORATED CITIES are communities with a local elected government.

NATIONAL COAL HERITAGE AREA (NCHA) is a federally-designated National Heritage Area, and encompasses 13 counties in southern West Virginia: Boone, Cabell, Fayette, Logan, Lincoln, McDowell, Mercer, Mingo, Raleigh, Summers, Wayne, Wyoming and the Paint Creek & Cabin Creek Watersheds located in southern Kanawha County.

PUBLIC LANDS include state parks, state forests, wildlife management areas, U.S. Army Corps of Engineers lands, national park units, national forests and national wildlife refuges. Trails on these lands have not generally been mapped due to lack of digital data. City/county parks have not been mapped.

PUBLIC LAKES are those listed by WVDNR.

PUBLIC WATER ACCESS points indicate official put-in and take-out boat launch sites, often managed by the West Virginia Department of Natural Resources. They always have a parking area and often feature a ramp.

ROADS that are mapped are the two and four lane-major highways. Their presence on the map helps orient the reader.

RIVERS that are mapped are those that have WVDNR public water access points or official access points.

TRAILHEADS are official access points for trails, and often include parking, signage, water, and restrooms.

Legend

- Existing Trails
 - Motorized Trail
 - Non-Motorized Trail
 - Rail-Trail
 - Roadside Trail
 - Nationally Designated Trail
 - Byways and Backways
- Capital - Charleston, WV
- Cities - Incorporated
- Public Water Access Sites
- Major Rivers
- Public Lakes
- Public Lands
- National Coal Heritage Area

